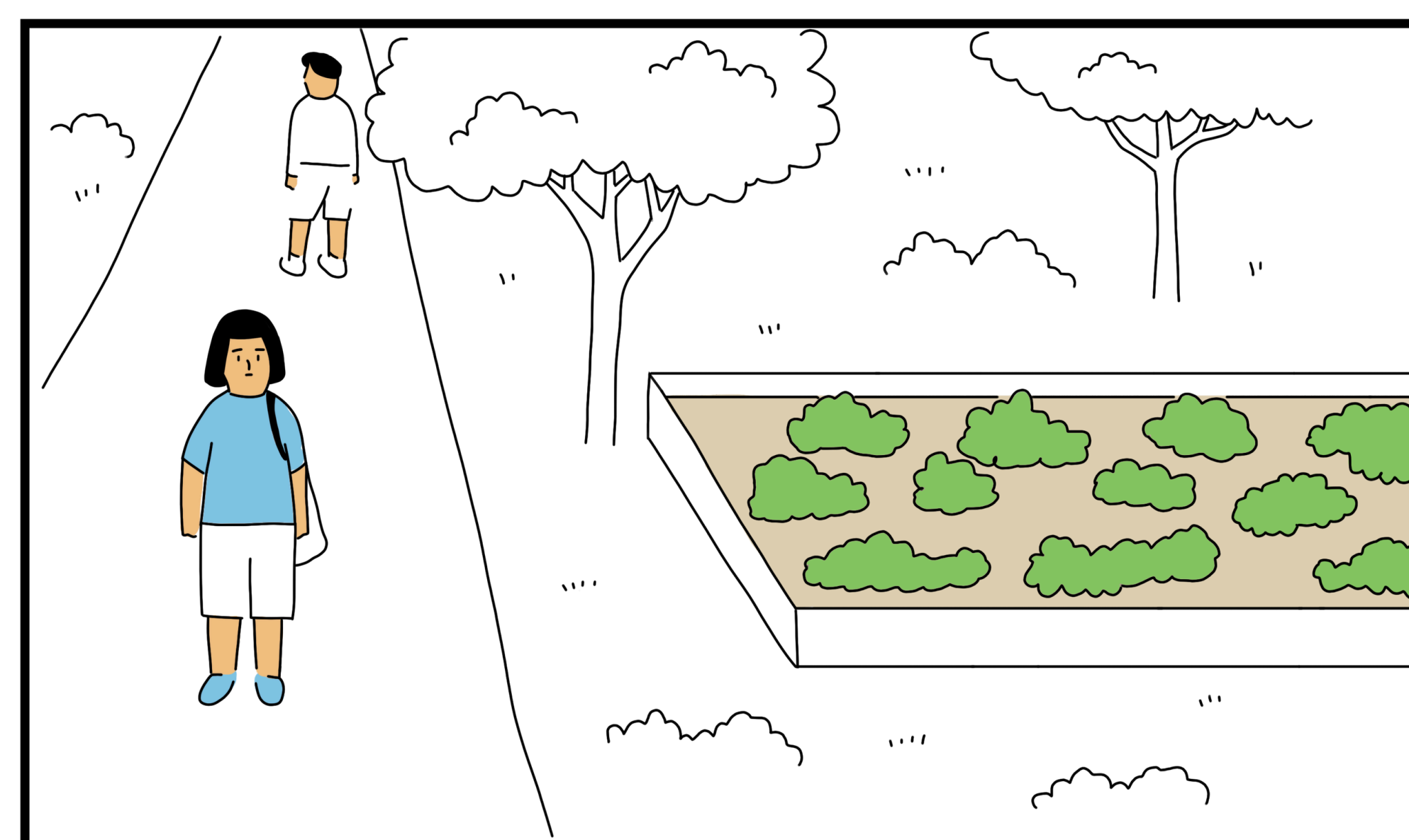
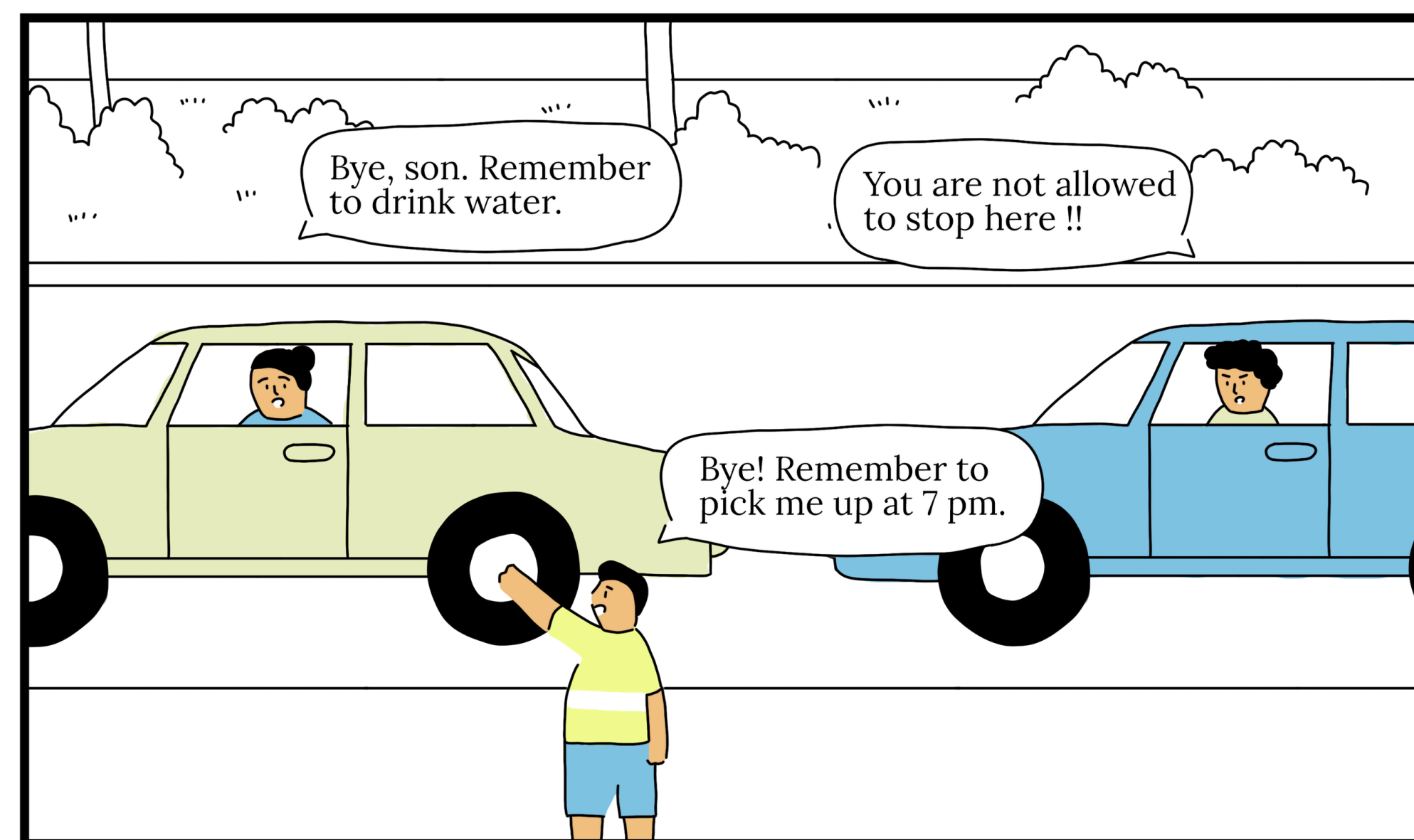
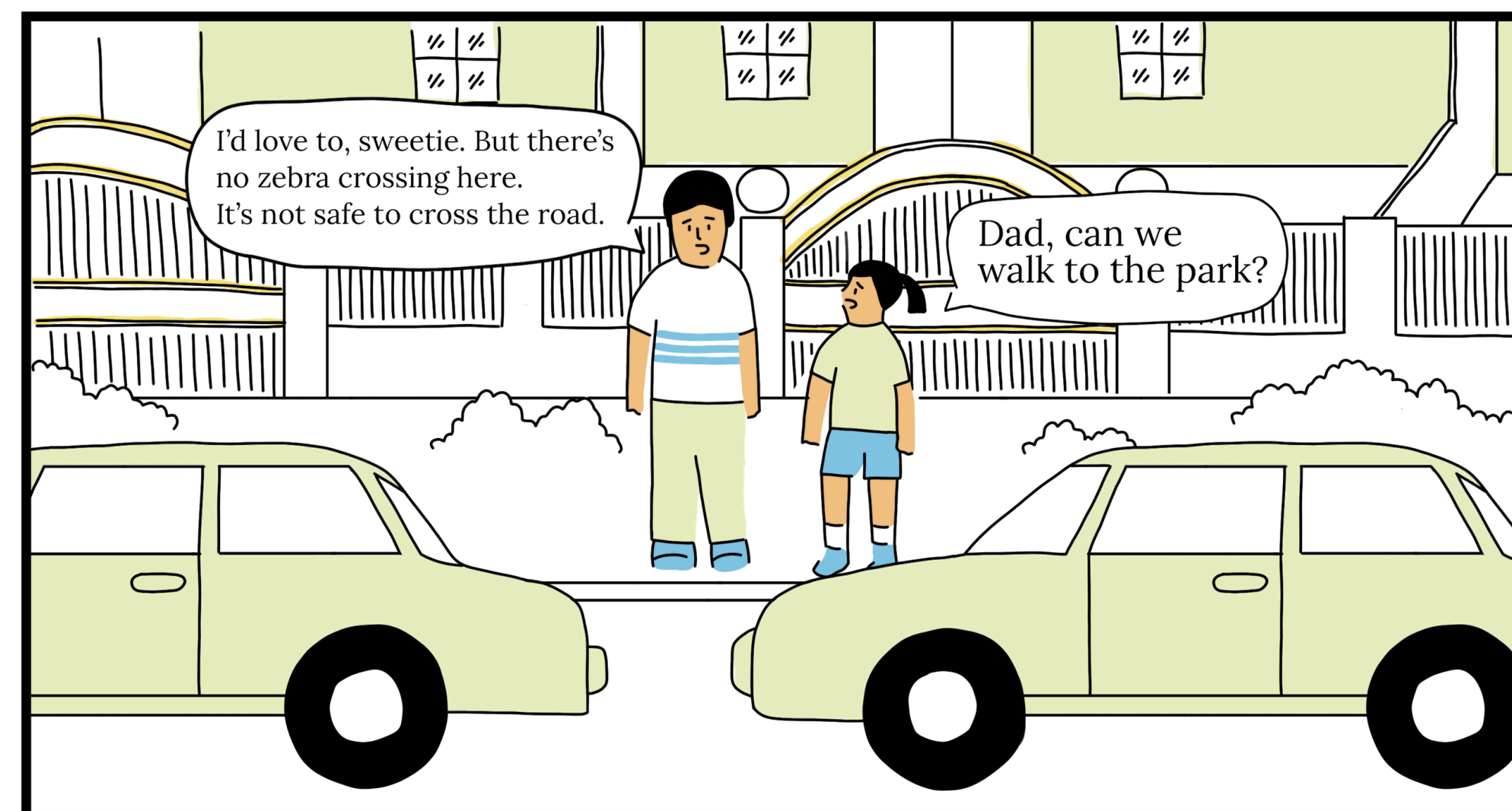
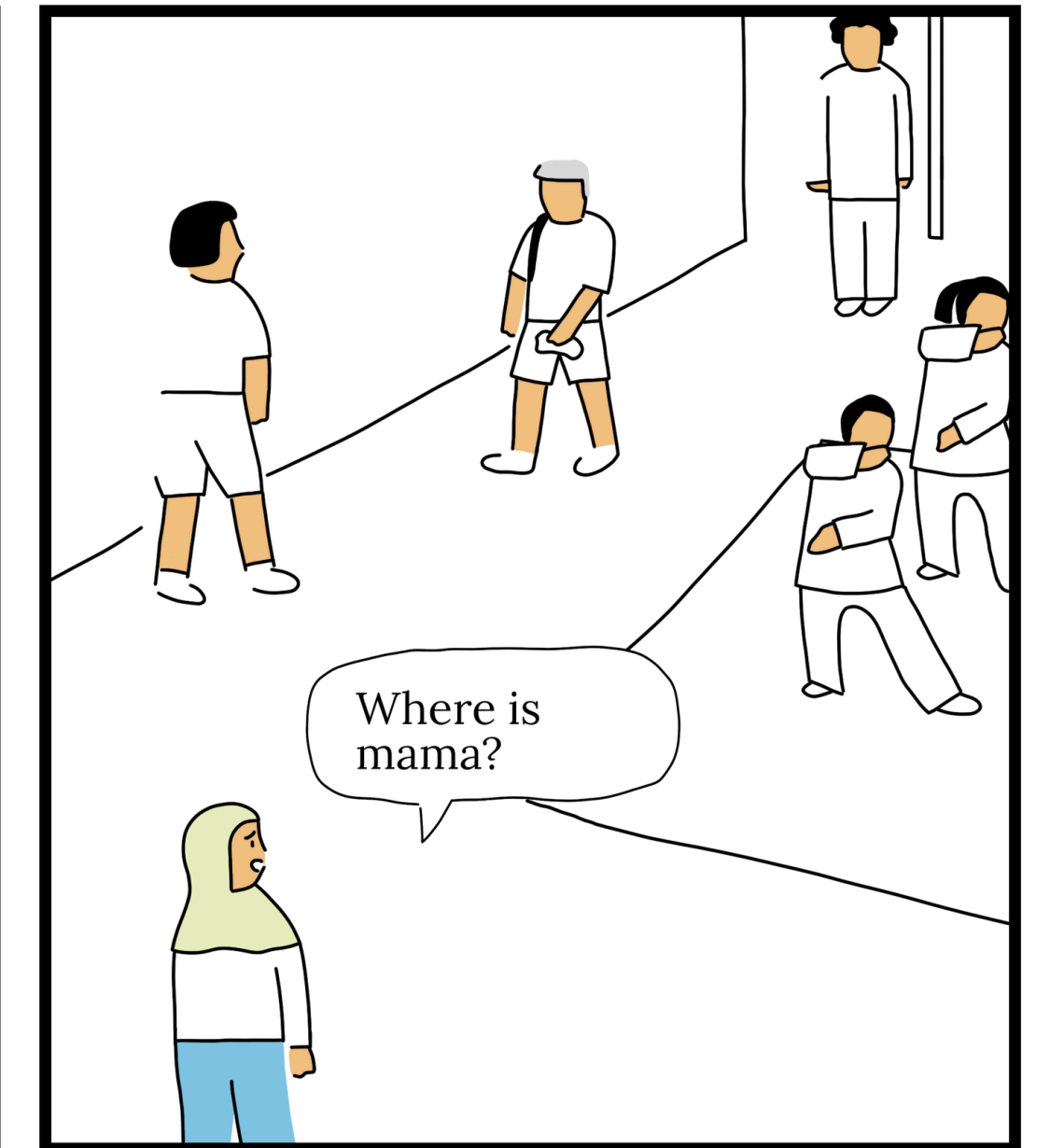
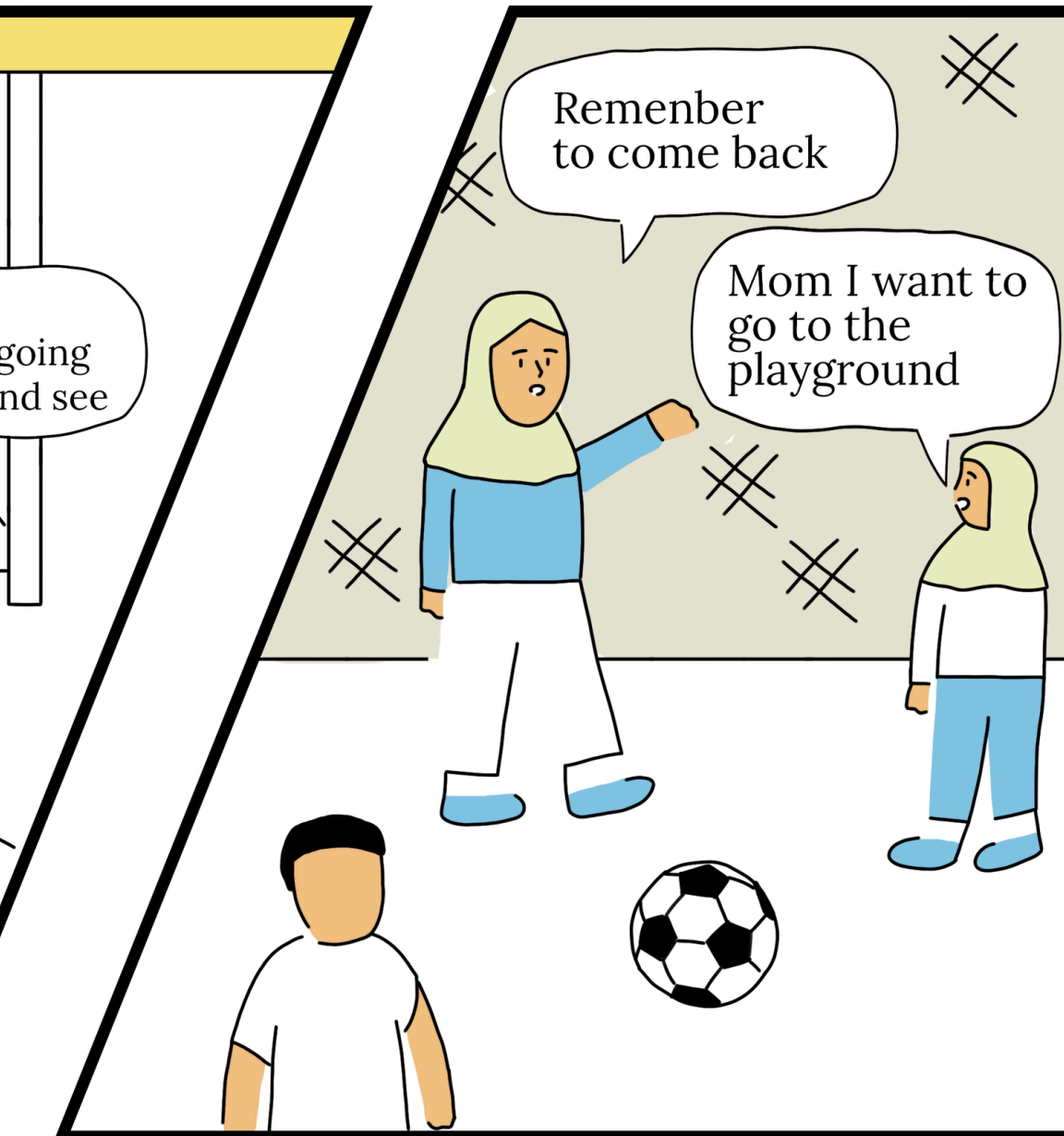
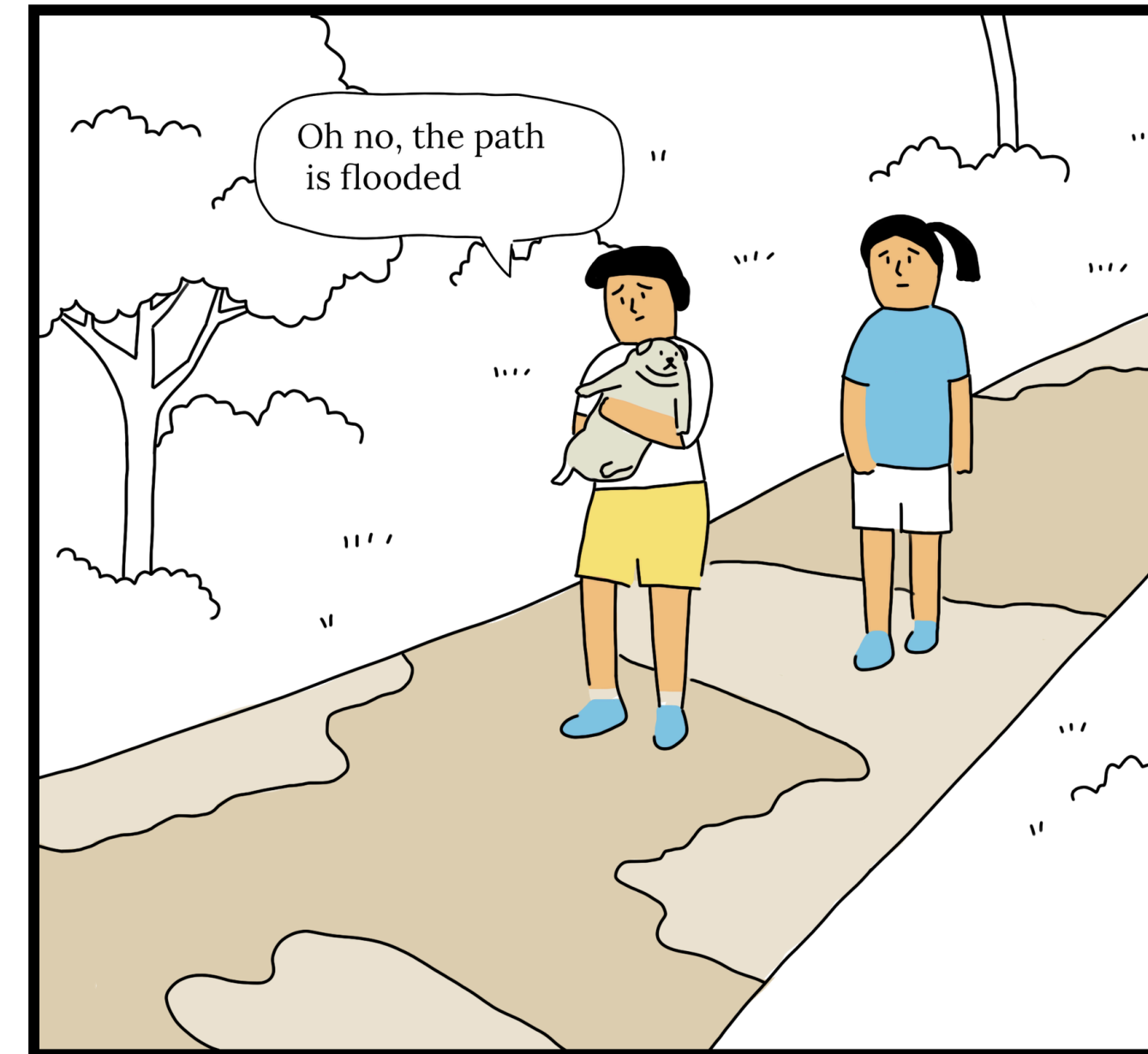
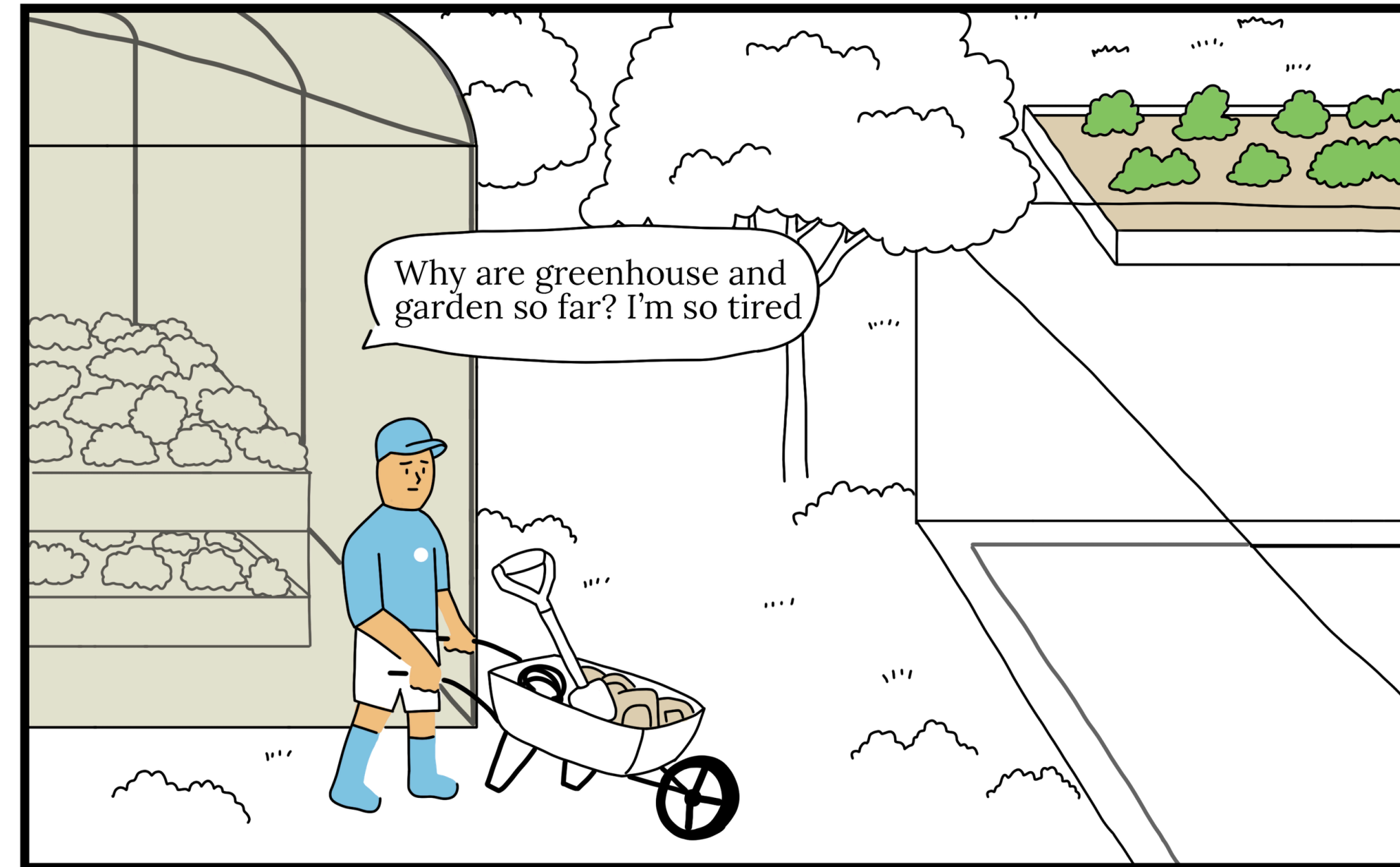
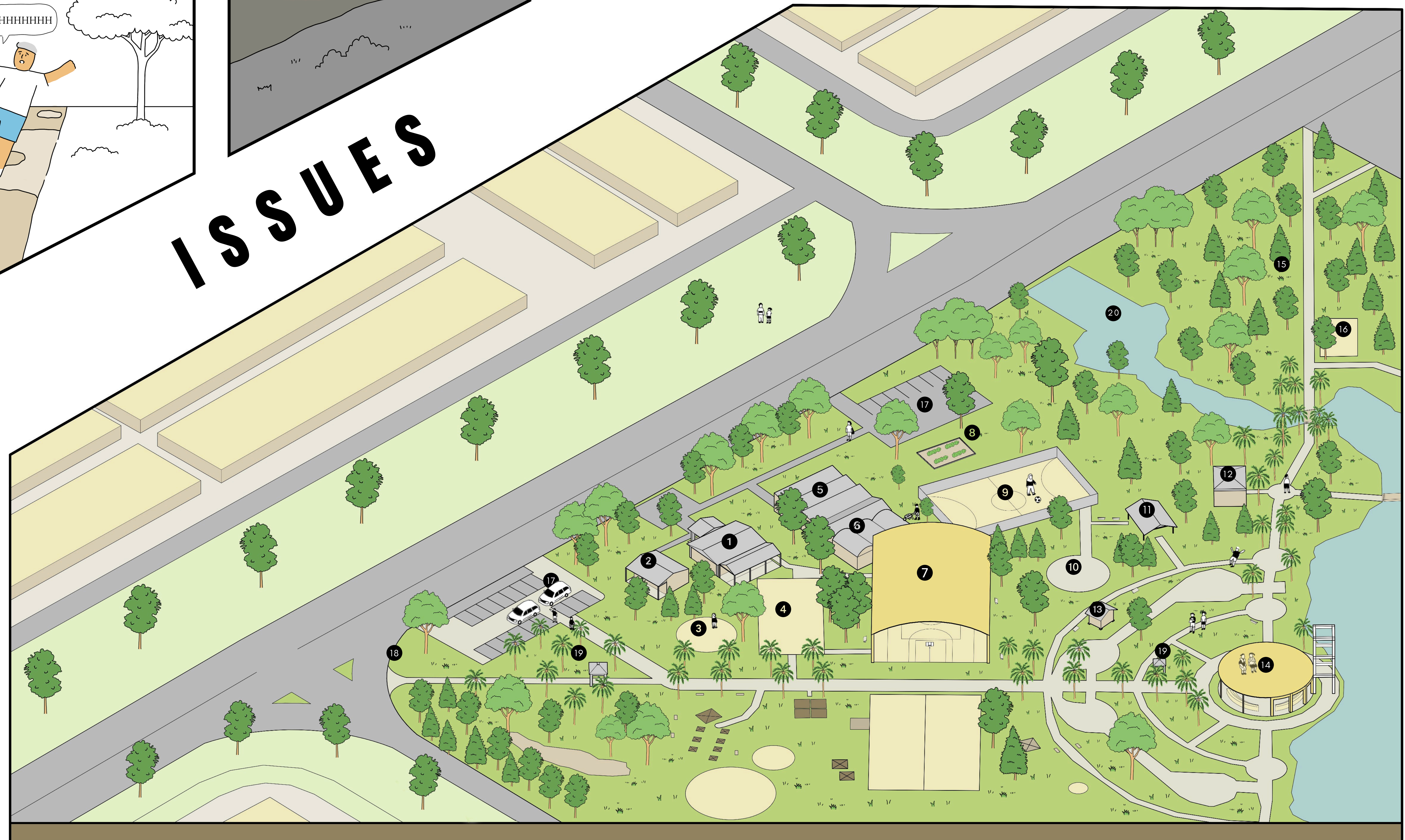


TAMAN WAWASAN RECREATION CENTRE



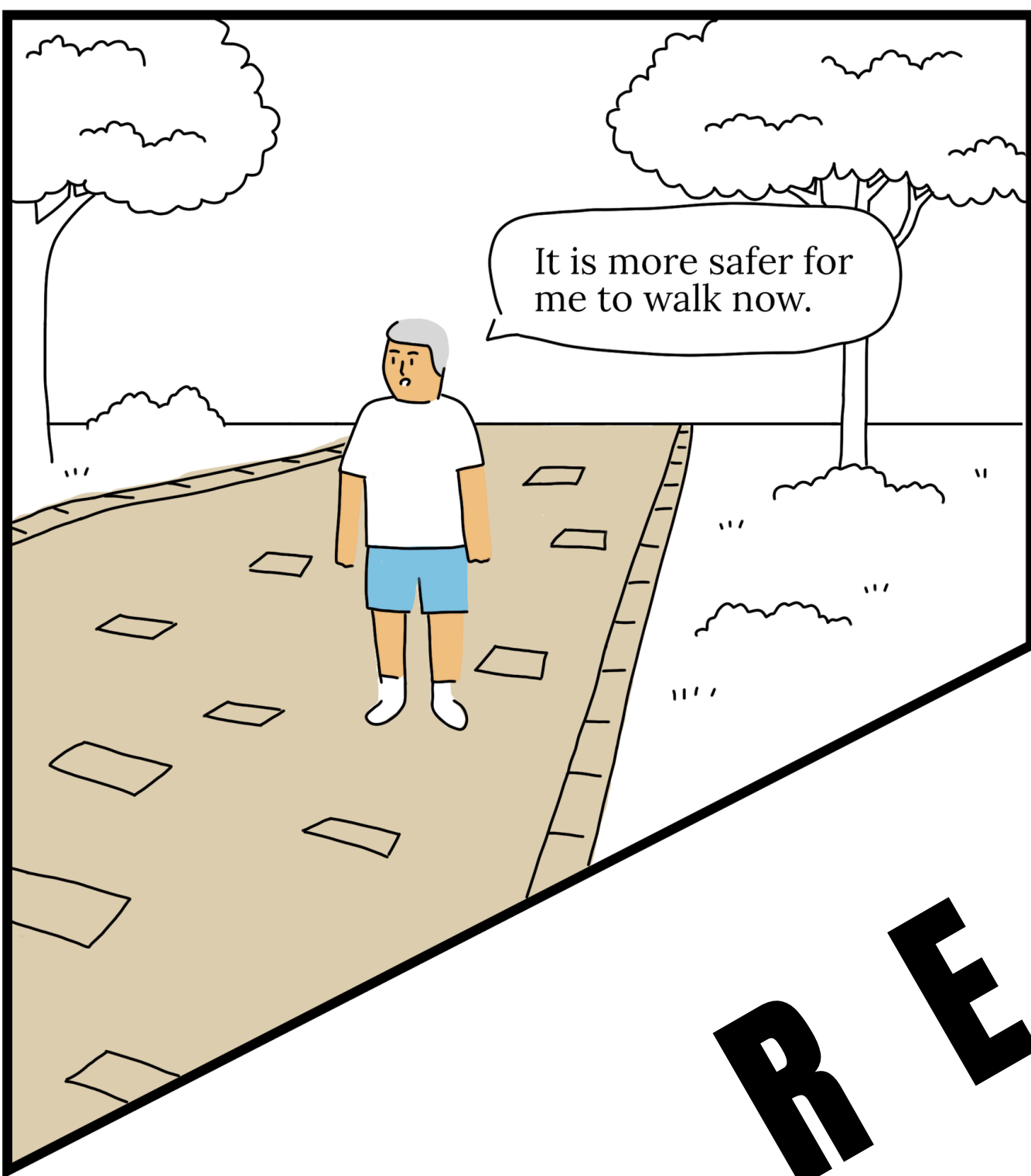
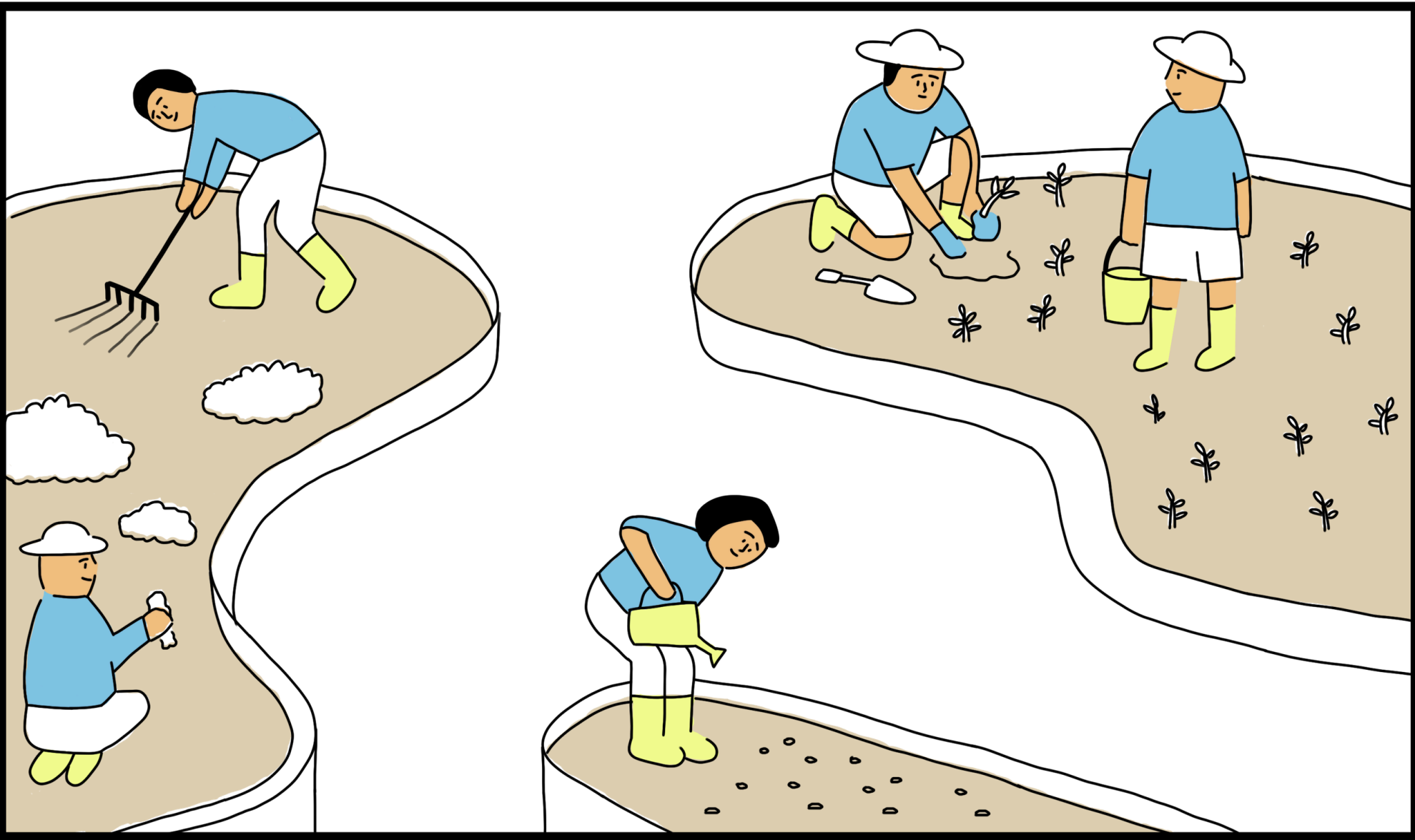
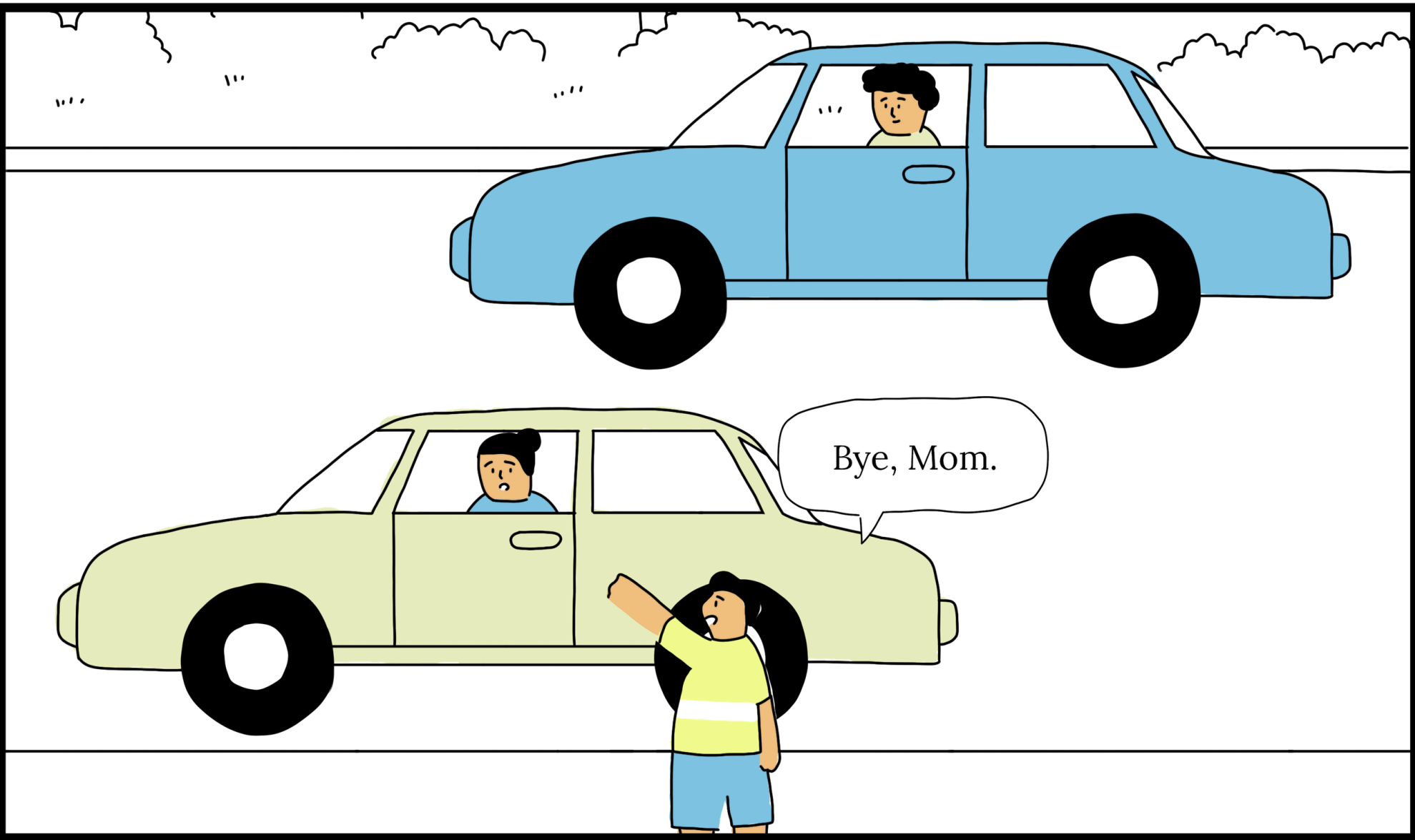
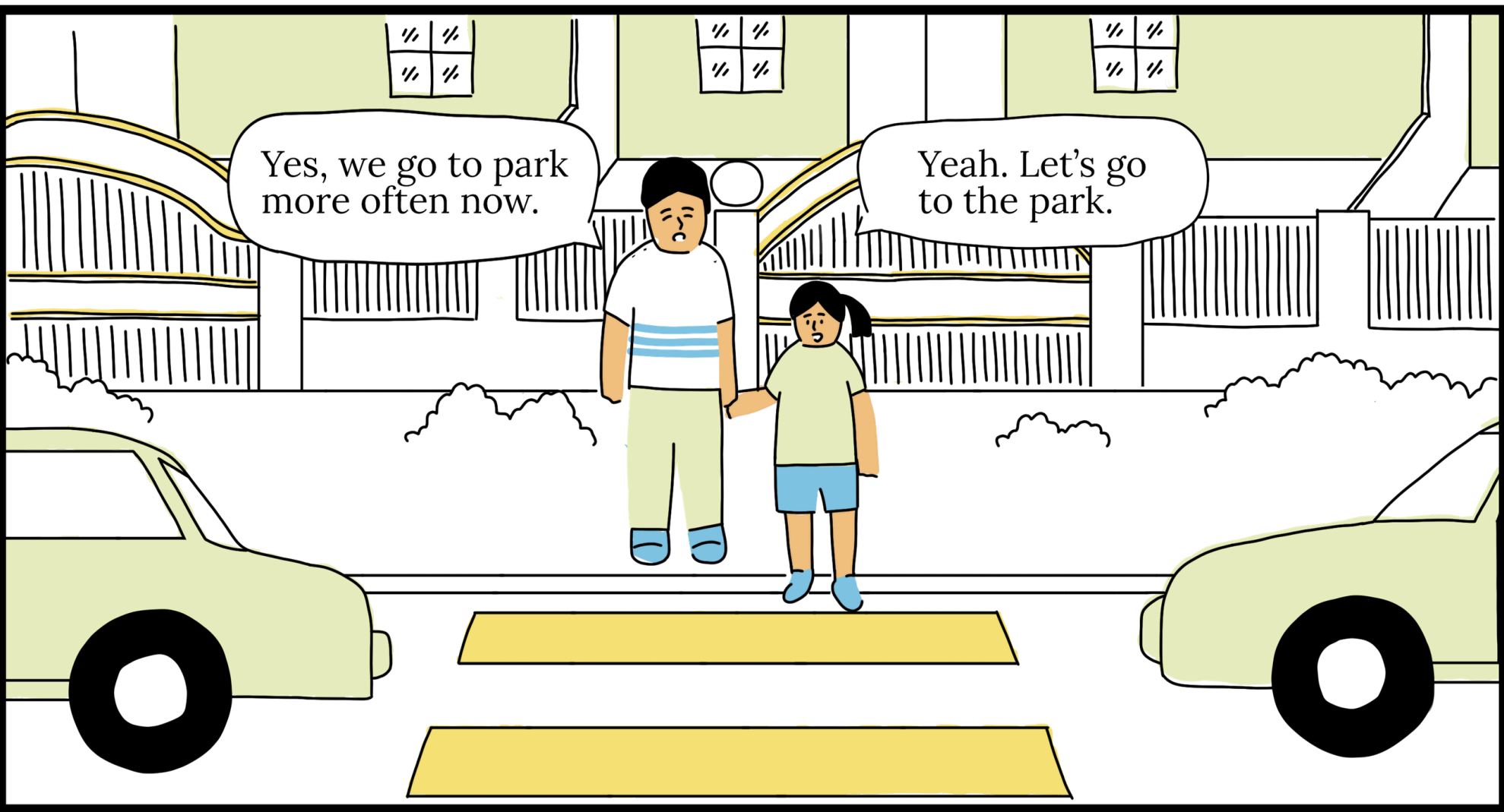
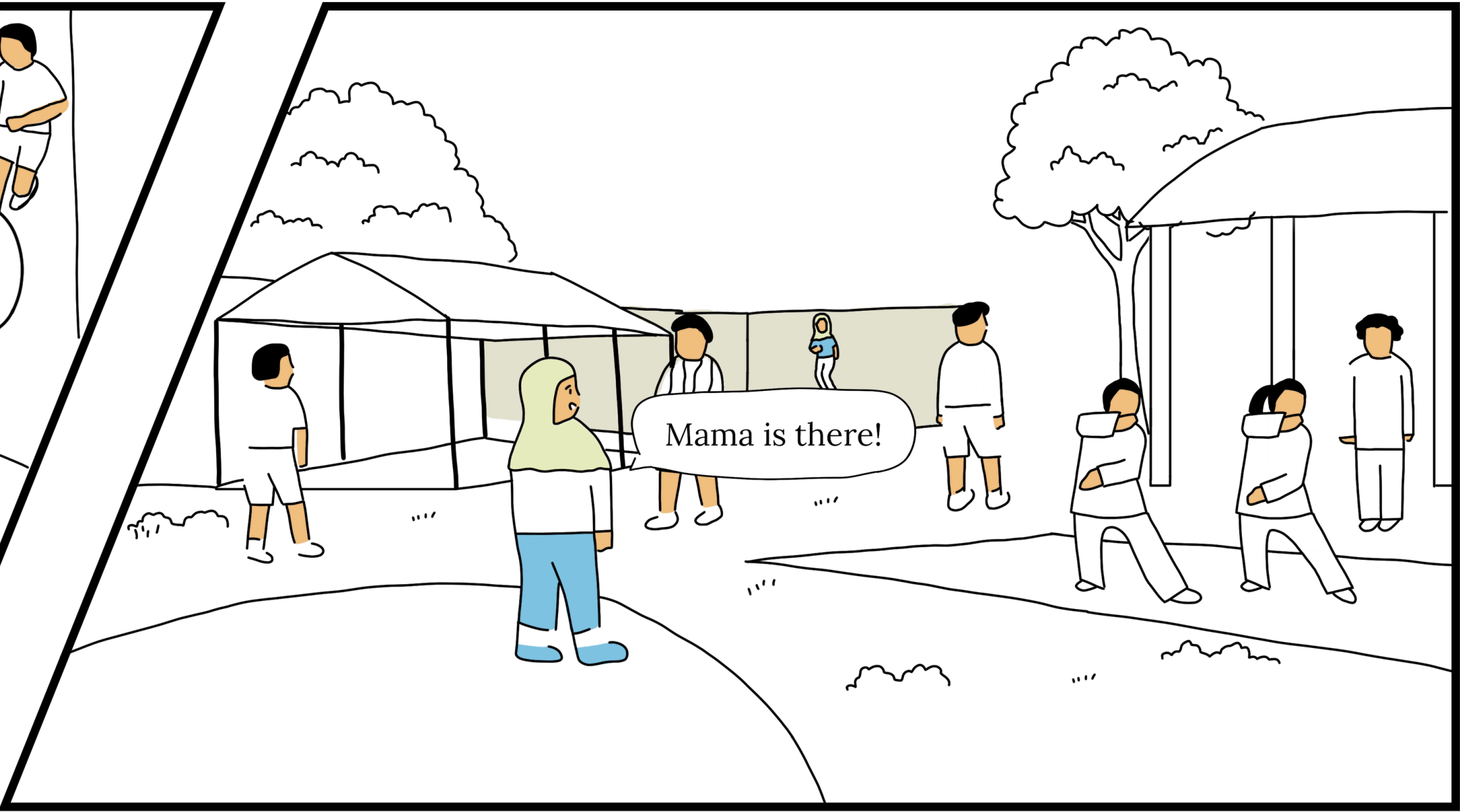
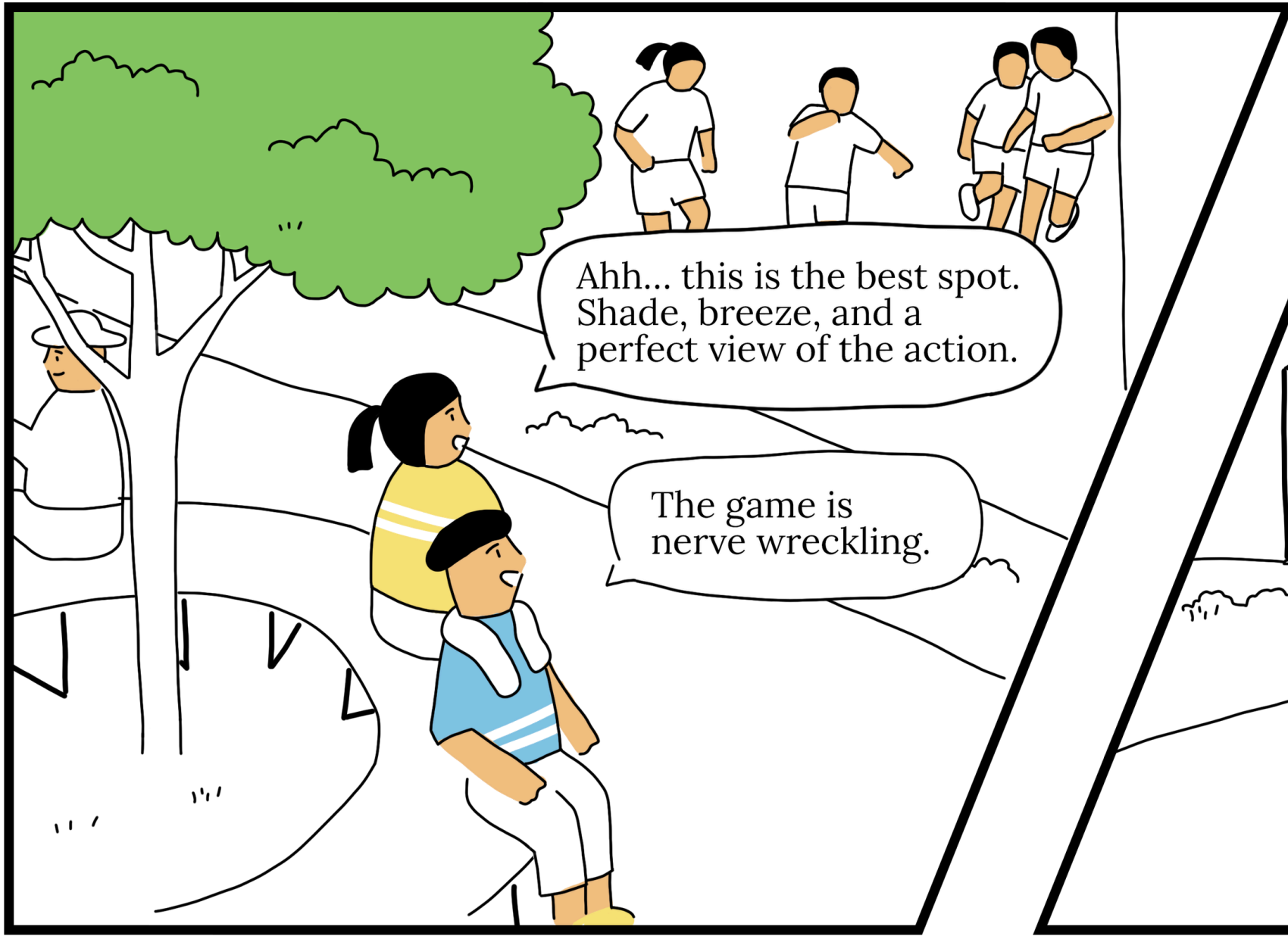
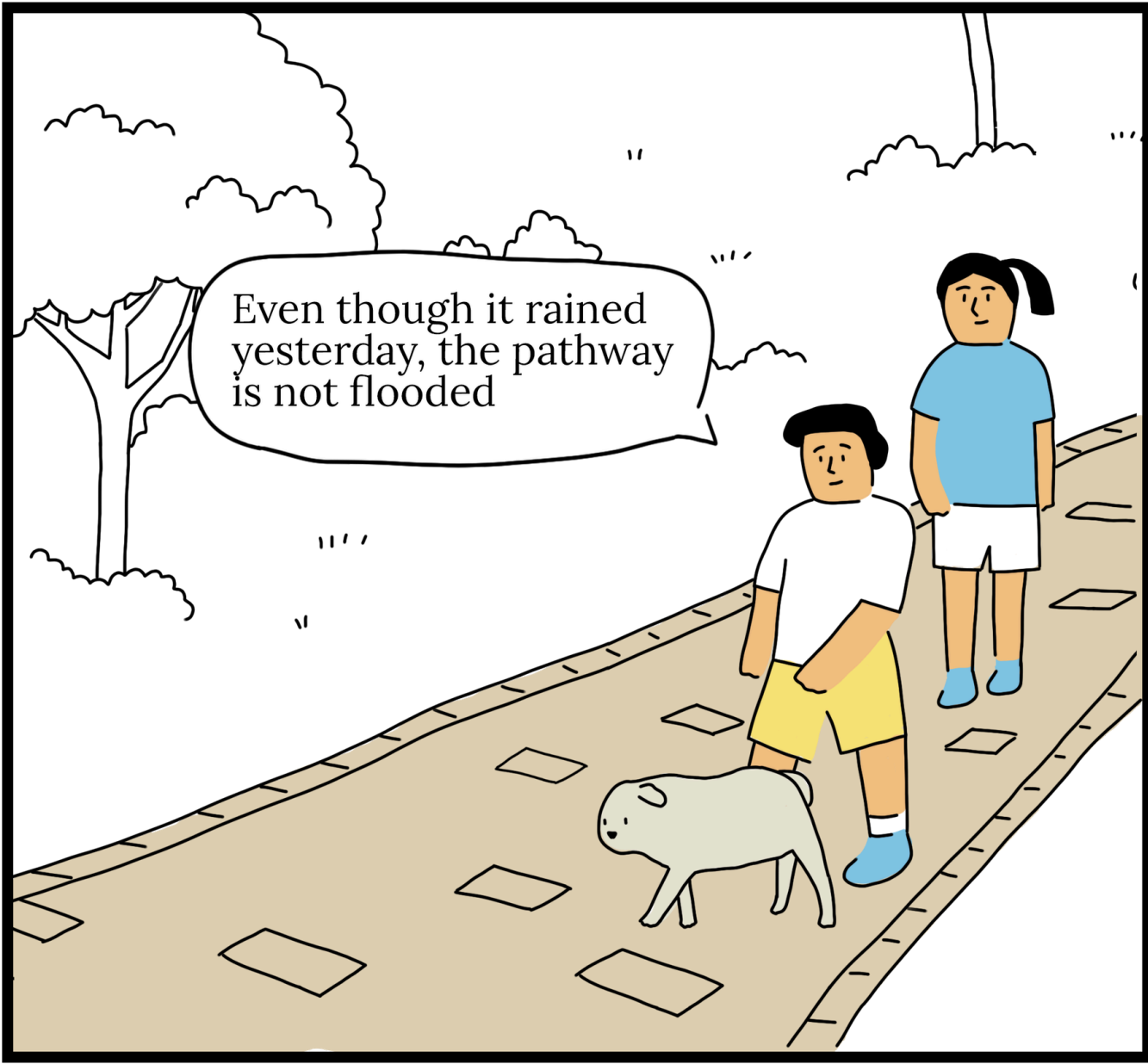
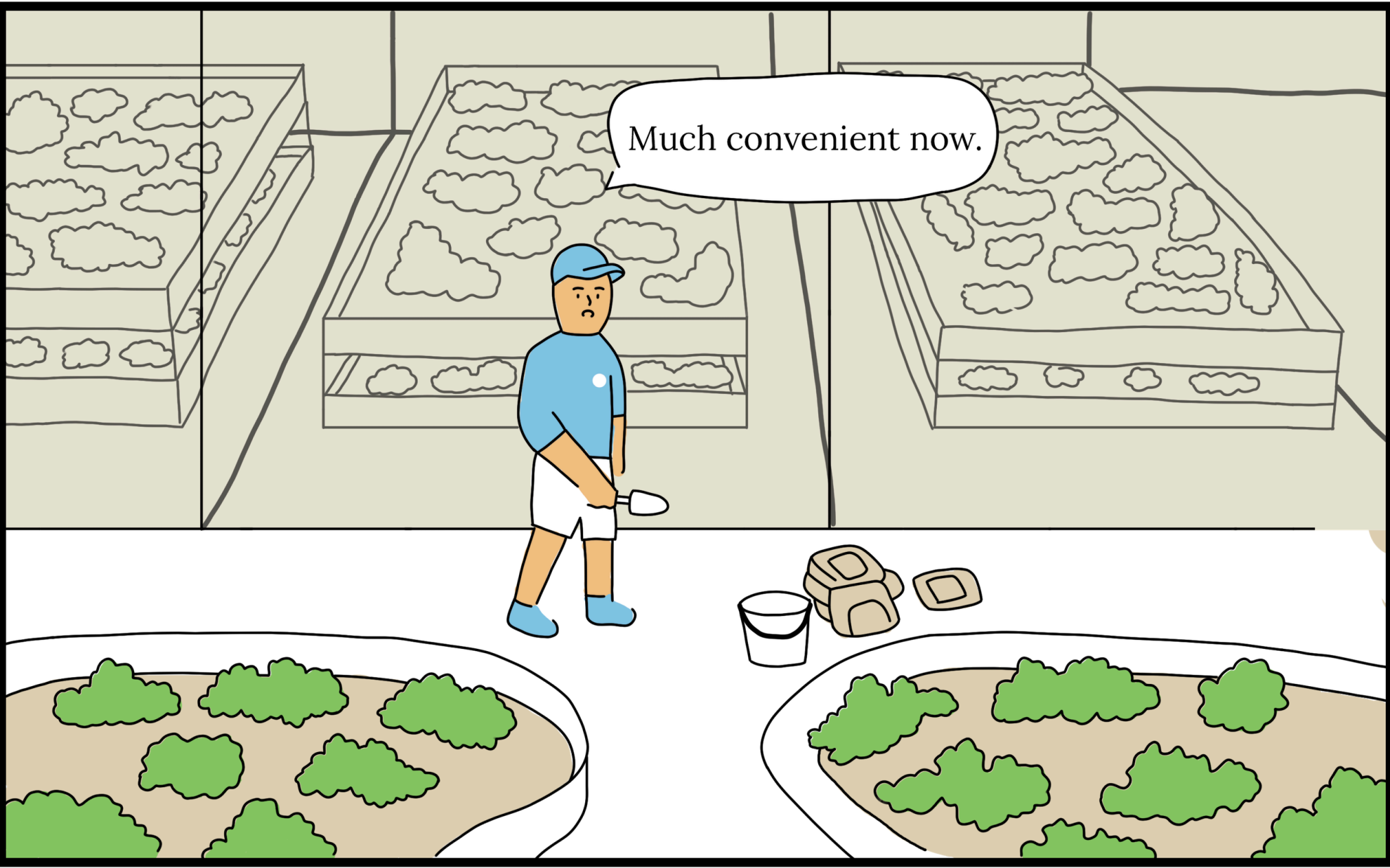
ISSUES

ORIGINAL SITE PLAN



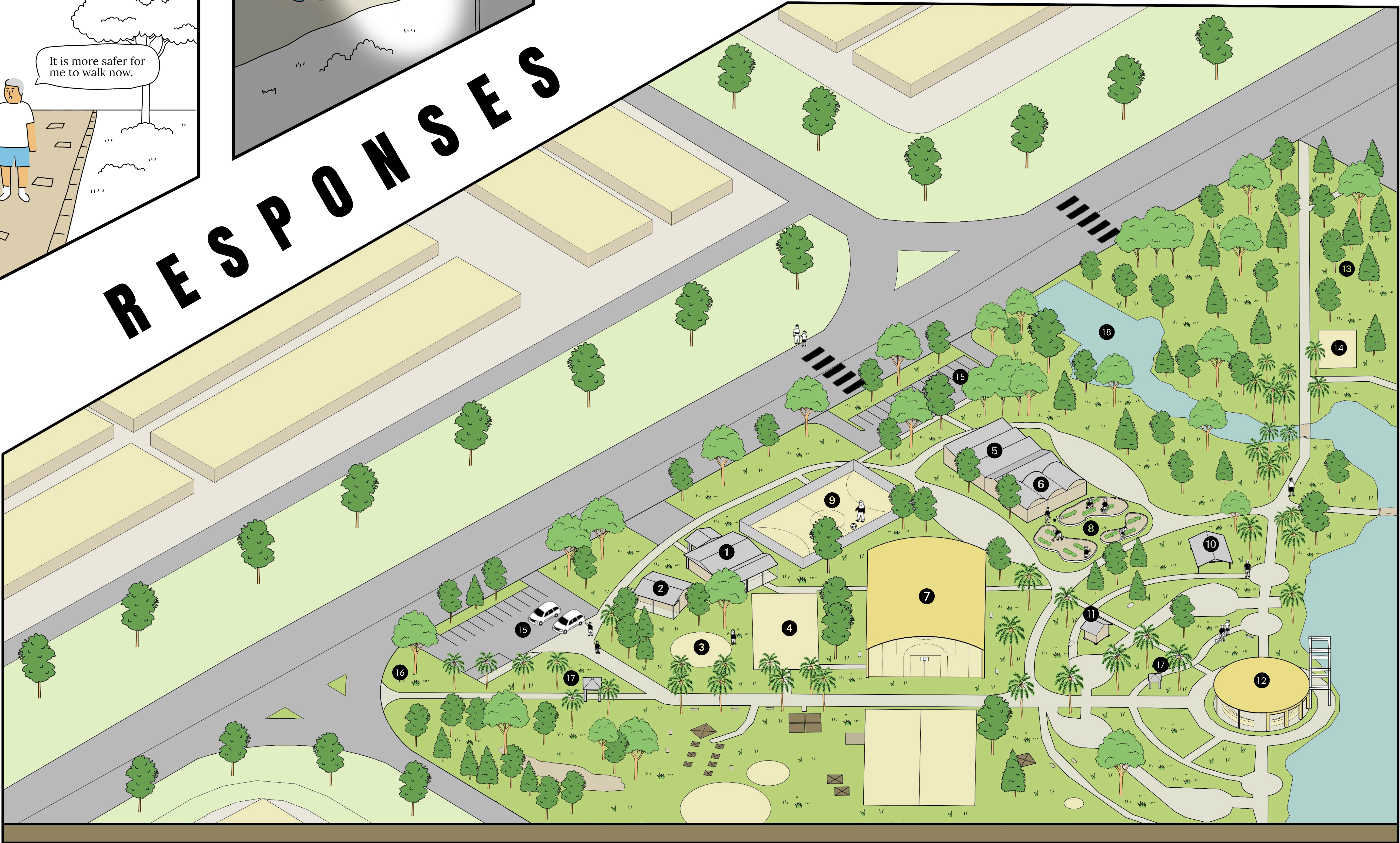
LEGEND

- | | | | | | |
|-------------------------|-------------------|----------------|------------------|-----------------|---------------|
| 1 ADMINISTRATION OFFICE | 4 BADMINTON COURT | 7 OPEN HALL | 10 PULL-UP BARS | 13 MINI LIBRARY | 16 GYM |
| 2 RECYCLING CENTRE | 5 WOODBALL CENTRE | 8 MINI GARDEN | 11 SITTING AREA | 14 AMPHITHEATRE | 17 PARKINGS |
| 3 PLAYGROUND | 6 GREENHOUSE | 9 FUTSAL COURT | 12 PUBLIC TOILET | 15 WOODBALL | 18 LANDMARK |
| | | | | | 19 GAZEBO |
| | | | | | 20 WATER BODY |



RESPONSES

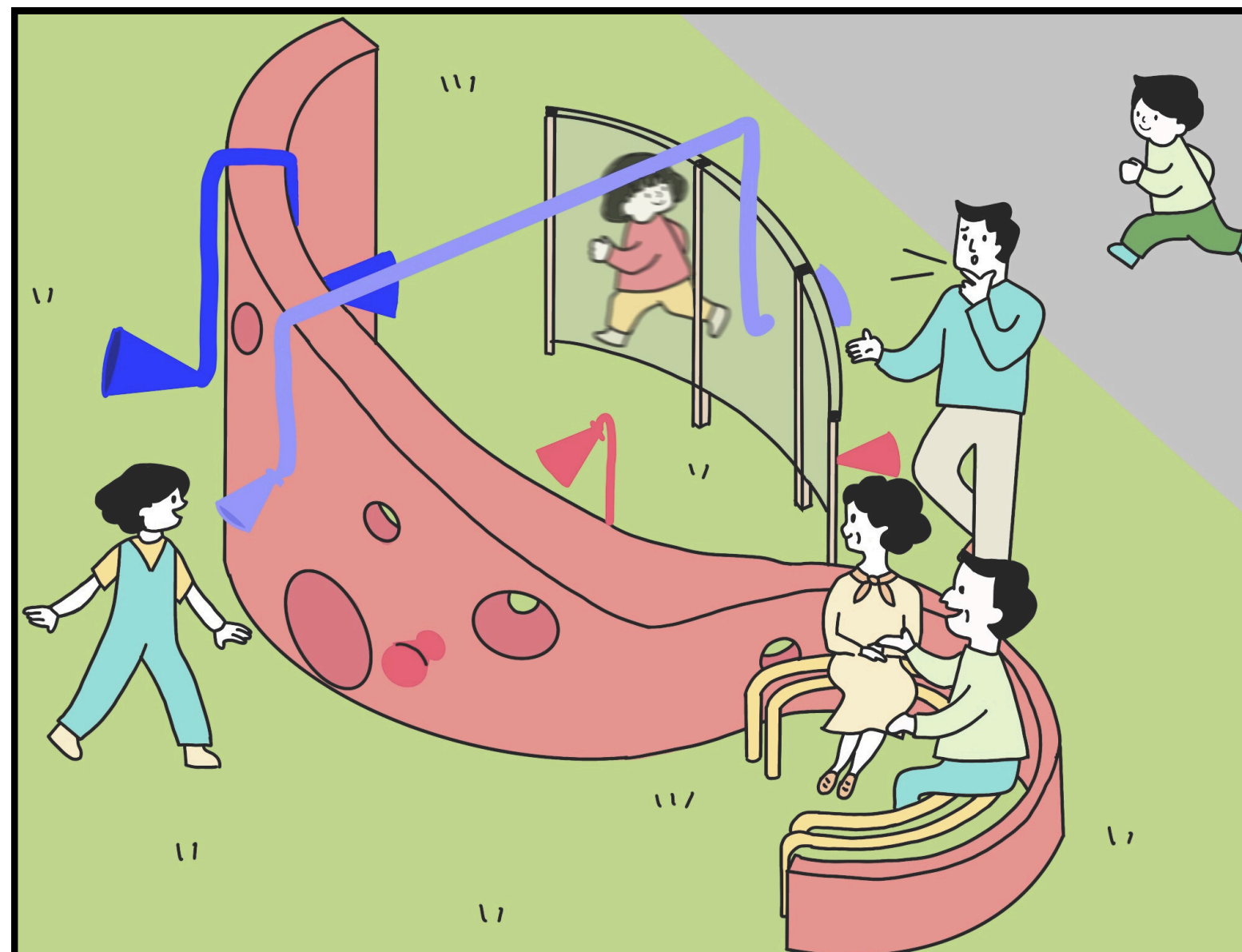
PROPOSAL
SITE PLAN



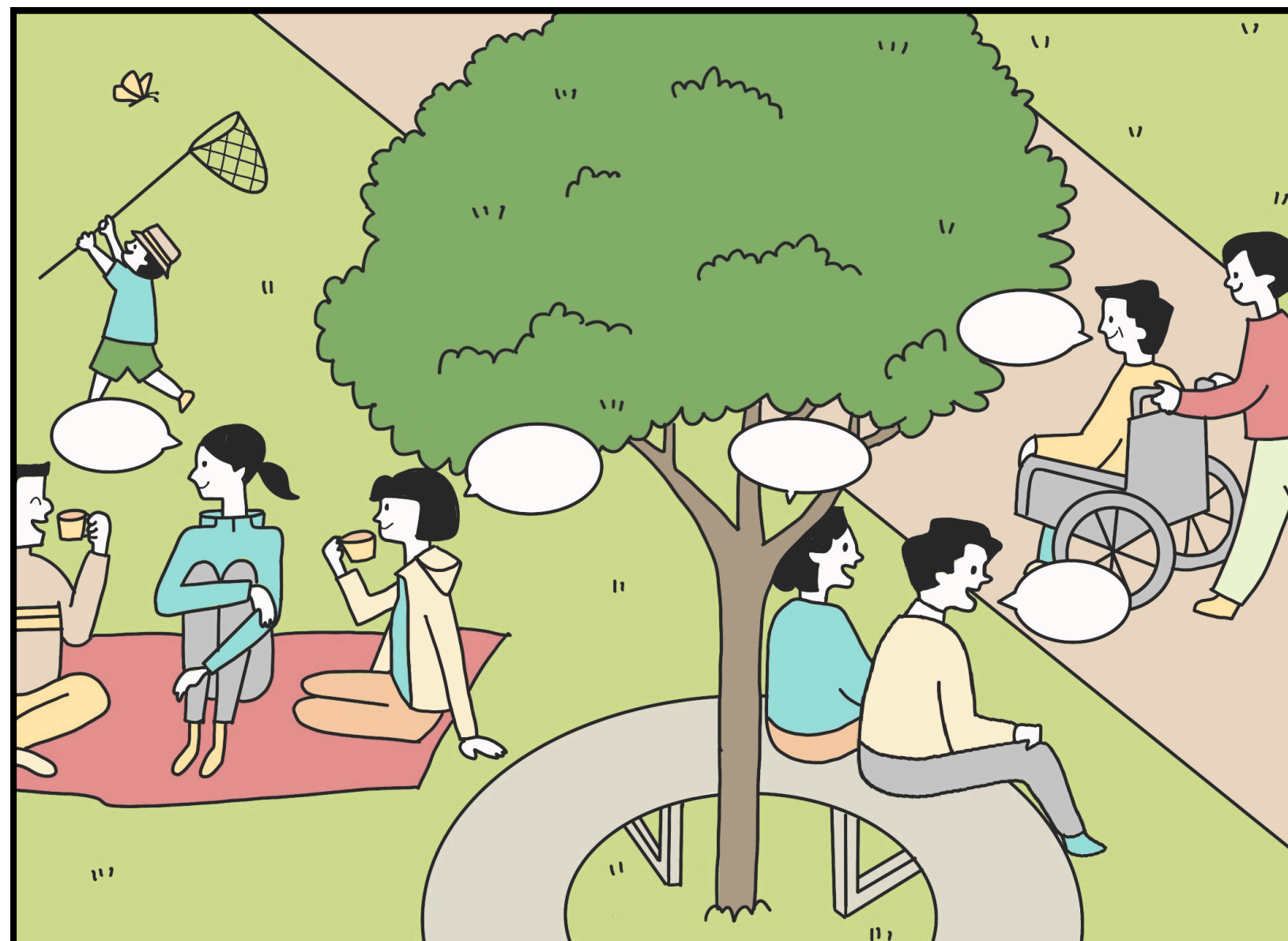
LEGEND					
1 ADMINISTRATION OFFICE	4 BADMINTON COURT	7 OPEN HALL	10 SITTING AREA	13 WOODBALL	16 LANDMARK
2 RECYCLING CENTRE	5 WOODBALL CENTRE	8 MINI GARDEN	11 MINI LIBRARY	14 GYM	17 GAZEBO
3 PLAYGROUND	6 GREENHOUSE	9 FUTSAL COURT	12 AMPHITHEATRE	15 PARKINGS	18 WATER BODY

TAMAN WAWASAN RECREATION CENTRE

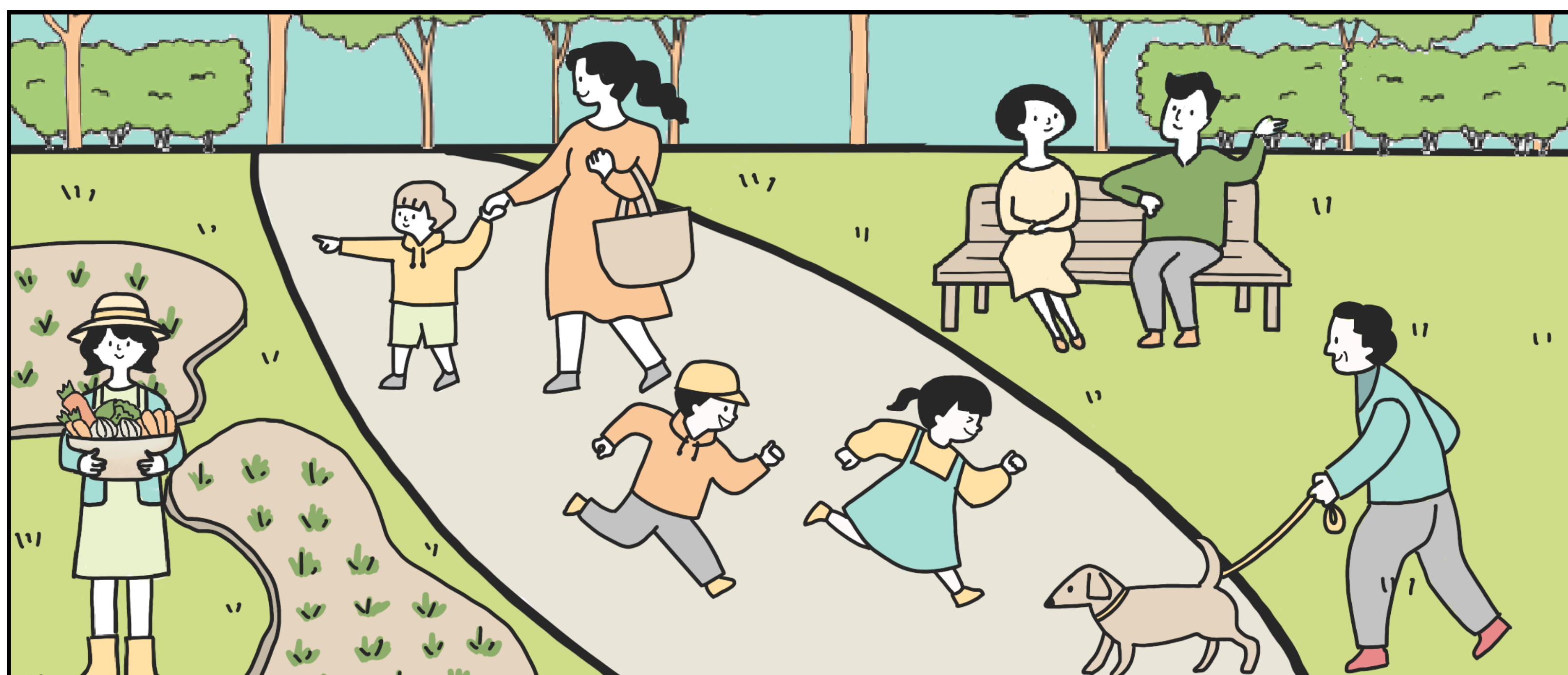
MANIFESTO : LISTEN , INCLUDE & CONNECT



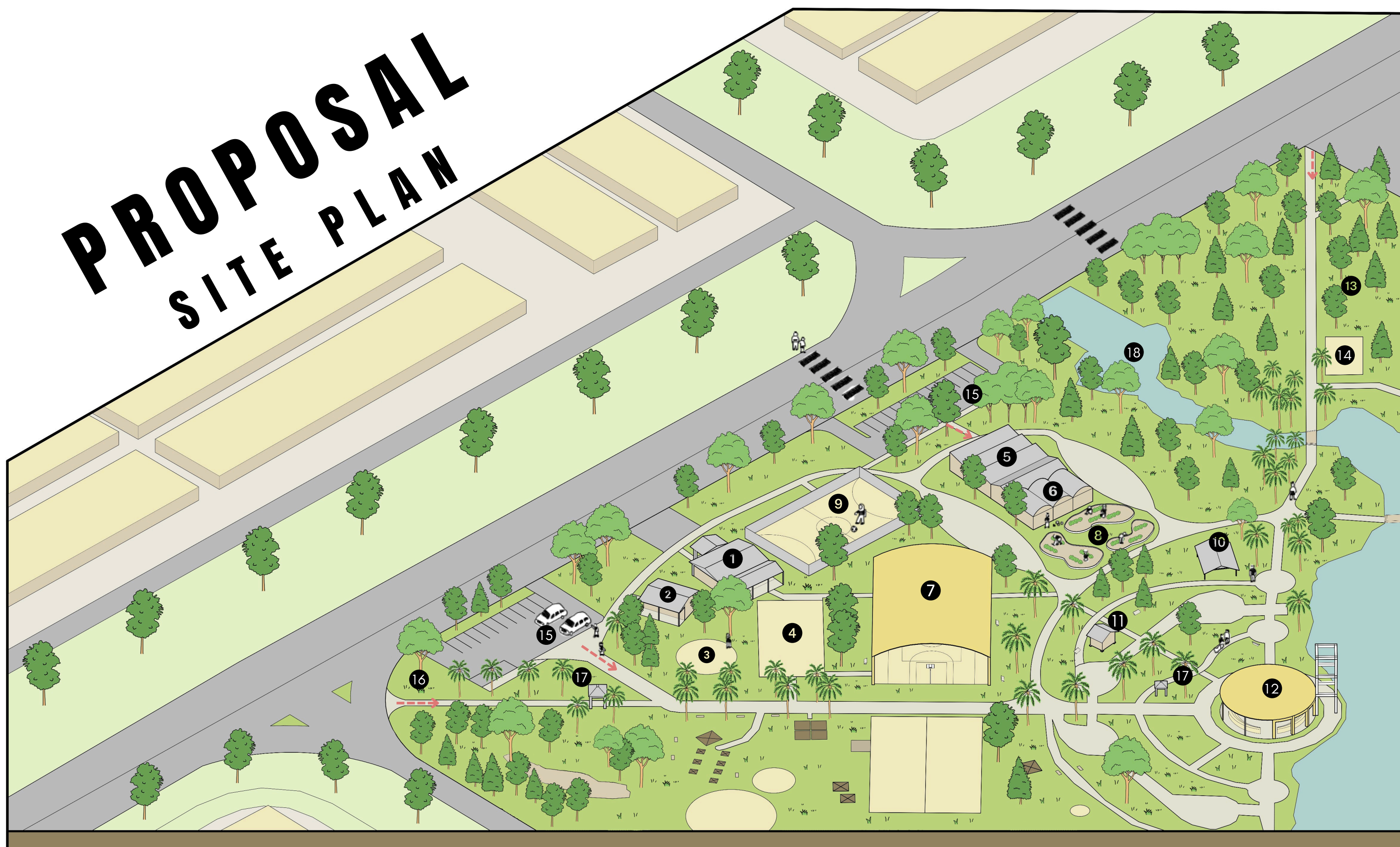
LISTEN Spaces where voices – spoken, seen or felt can be shared and acknowledged through play.



CONNECT Foster shared moments and movement where people cross paths exchange smiles and greeting.



INCLUDE Inviting everyone to take park and form a park for all , across ages and identities , ensuring no one is left out.

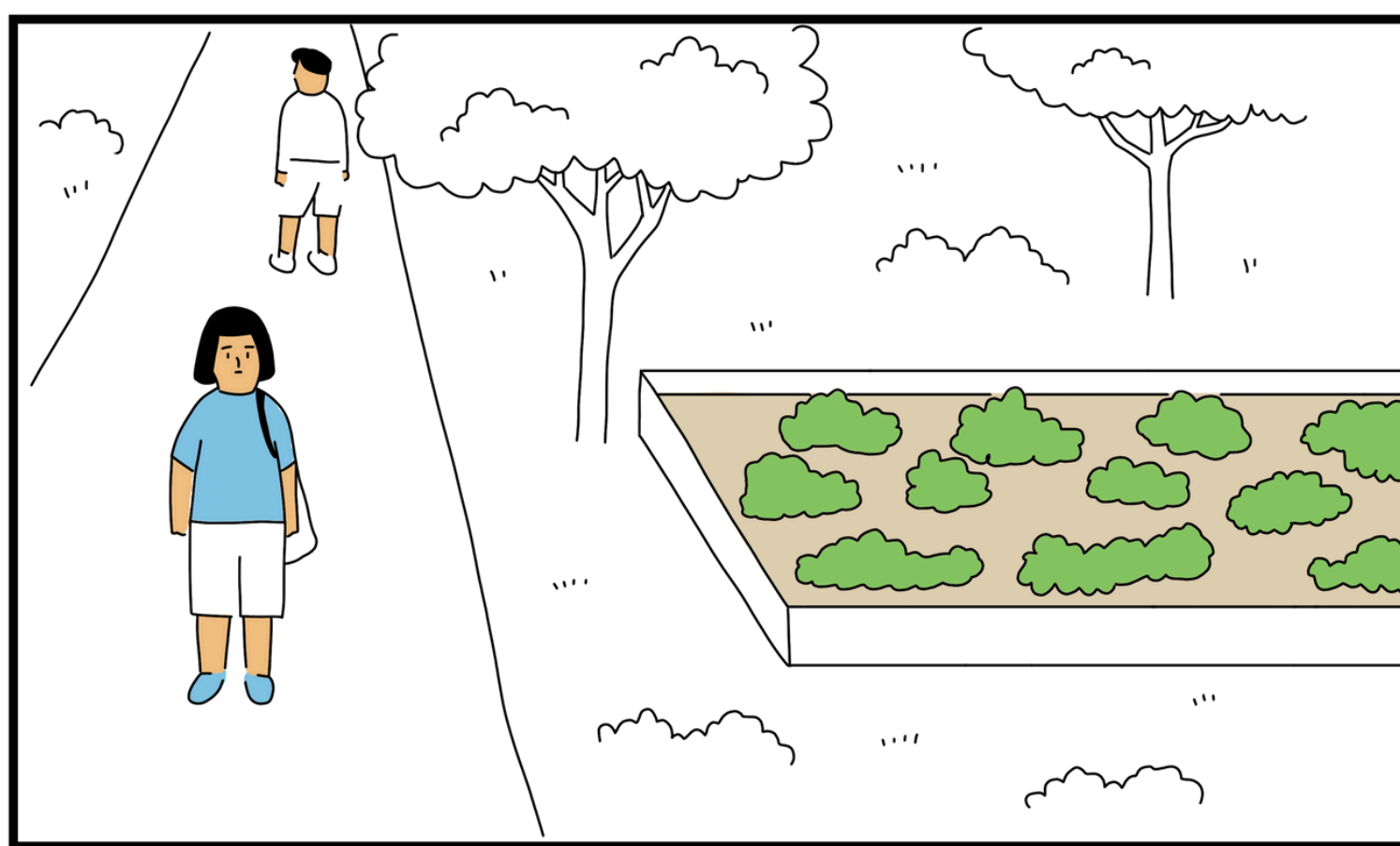
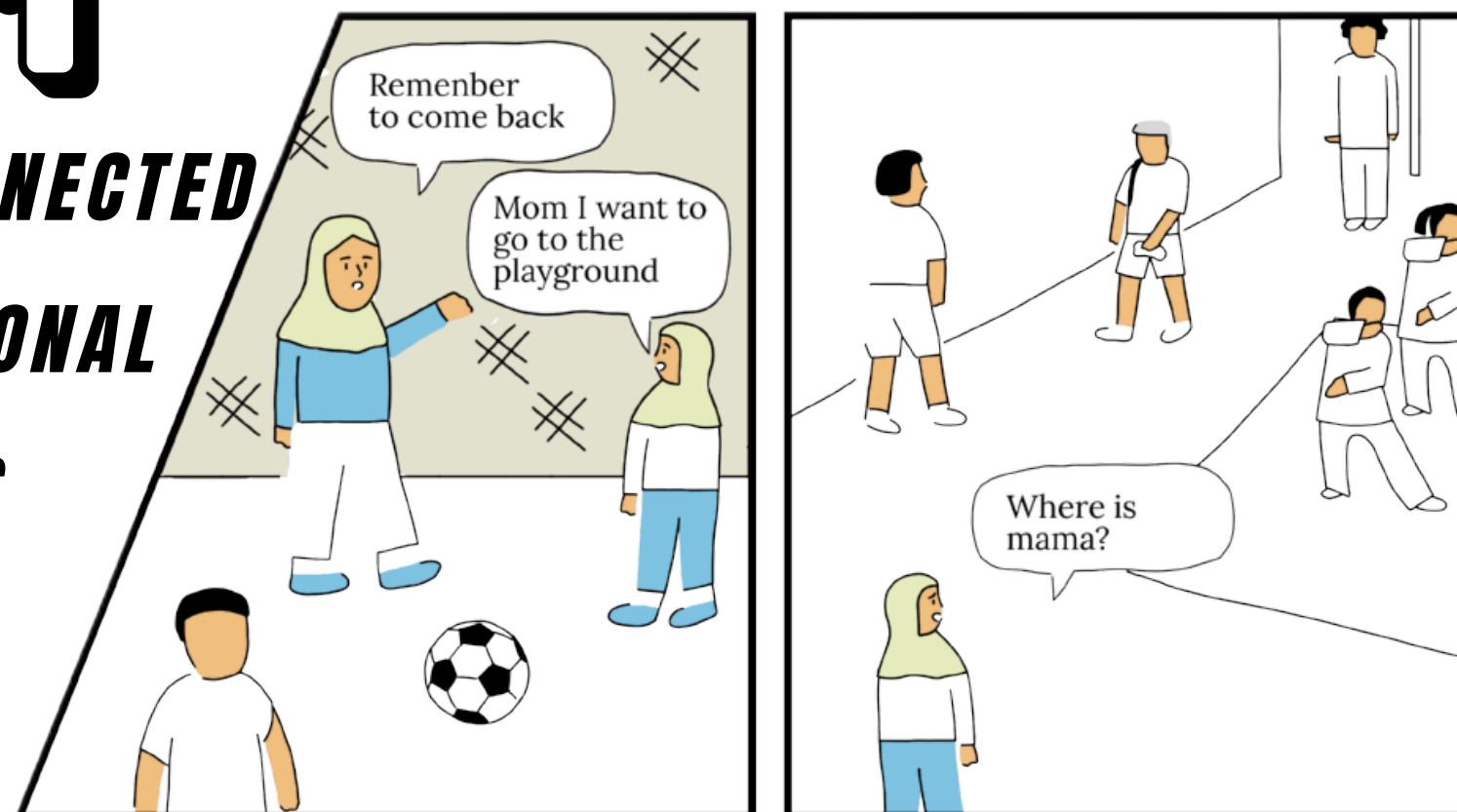


LEGEND

- | | | | |
|-------------------------|-----------------|-----------------|---------------|
| 1 ADMINISTRATION OFFICE | 6 GREENHOUSE | 11 MINI LIBRARY | 16 LANDMARK |
| 2 RECYCLING CENTRE | 7 OPEN HALL | 12 AMPHITHEATRE | 17 GAZEBO |
| 3 PLAYGROUND | 8 MINI GARDEN | 13 WOODBALL | 18 WATER BODY |
| 4 BADMINTON COURT | 9 FUTSAL COURT | 14 GYM | → ENTRANCES |
| 5 WOODBALL CENTRE | 10 SITTING AREA | 15 PARKINGS | |

1

DISCONNECTED FUNCTIONAL SPACES



ANALYSIS



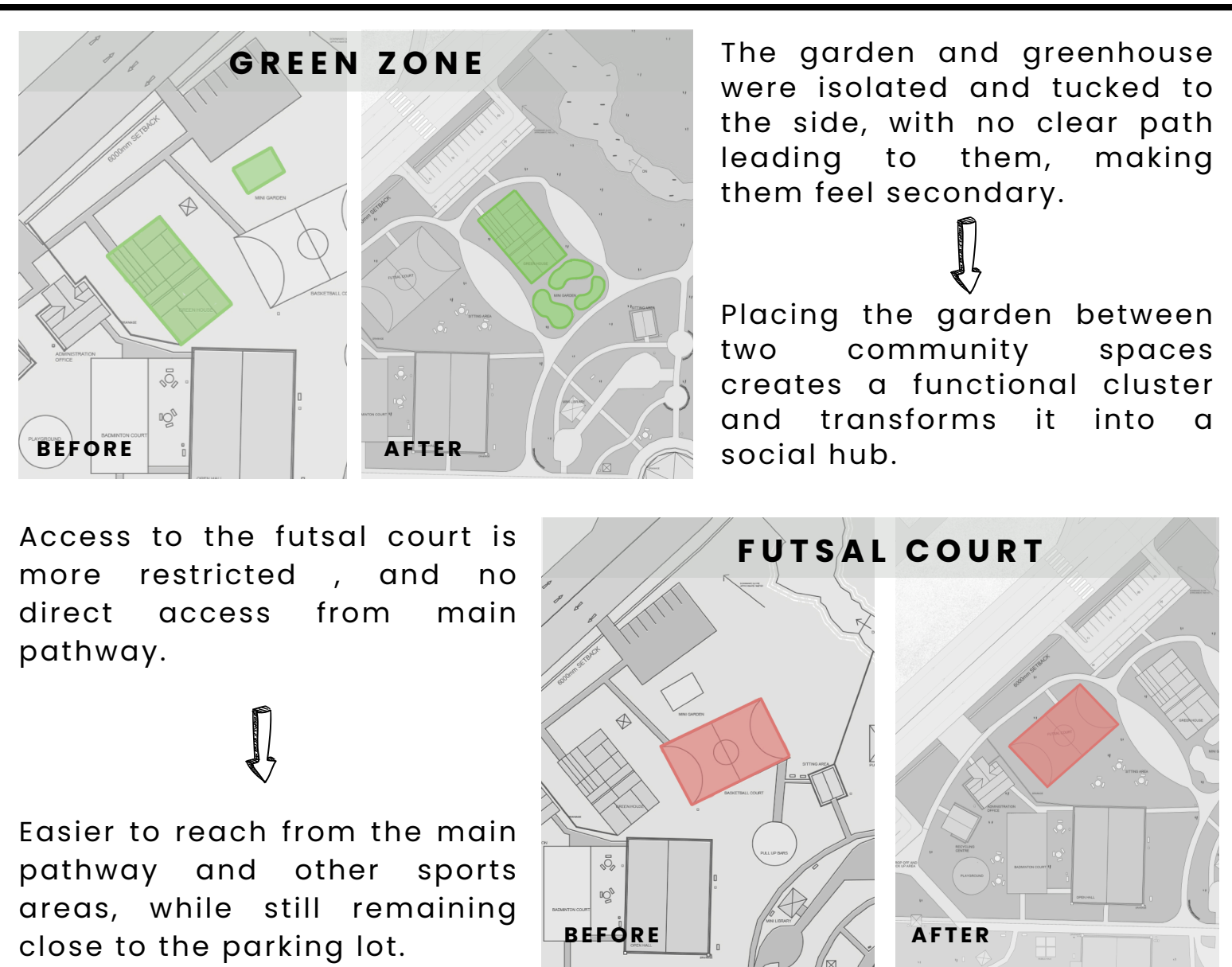
Scattered, disconnected functions disrupt circulation and confuse visitors.

RESPONSE



Spaces are reorganized into four clear zones for a more coherent layout and easier navigation.

SPATIAL ADJUSTMENT

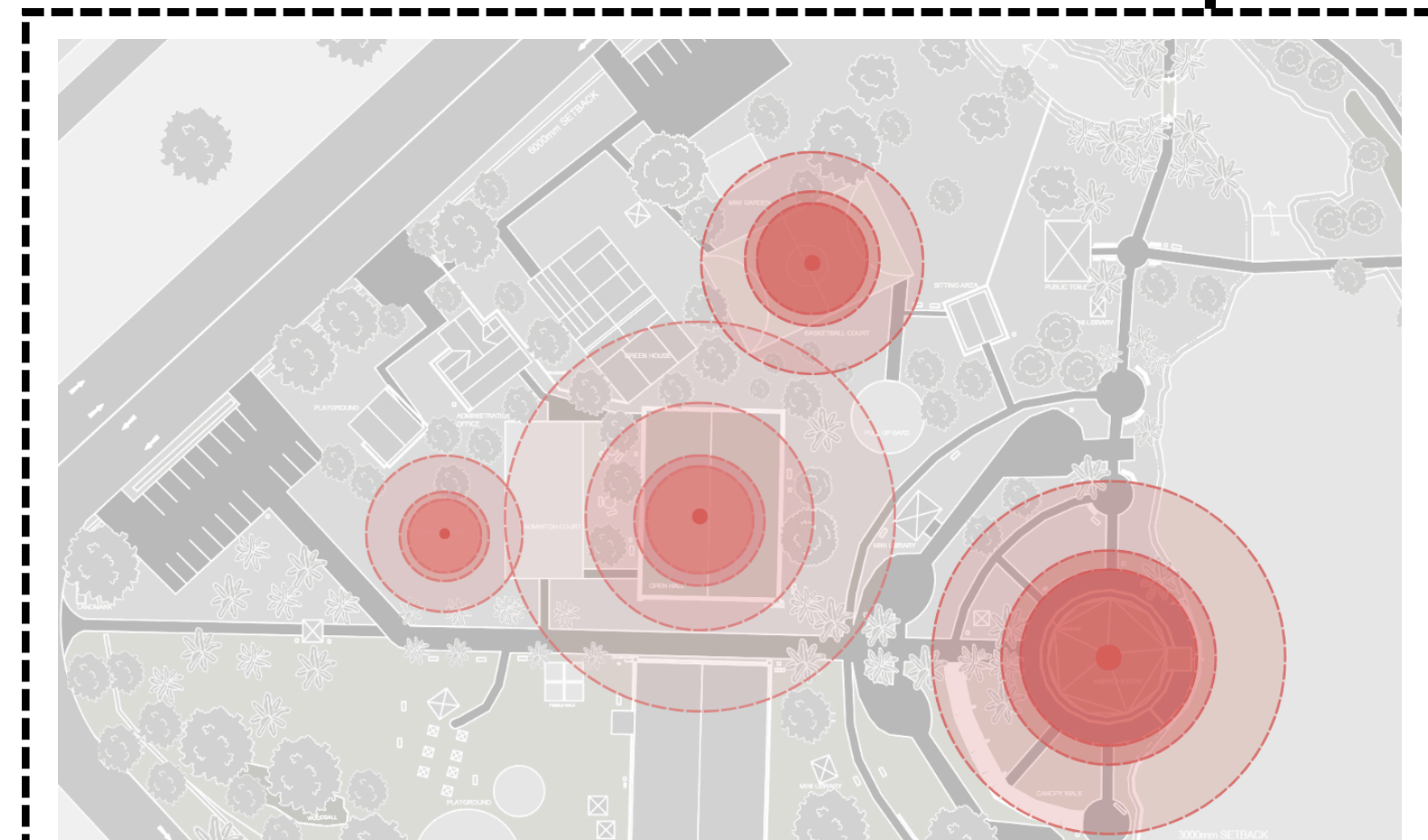


2

AFTERNOON PARK CROWD



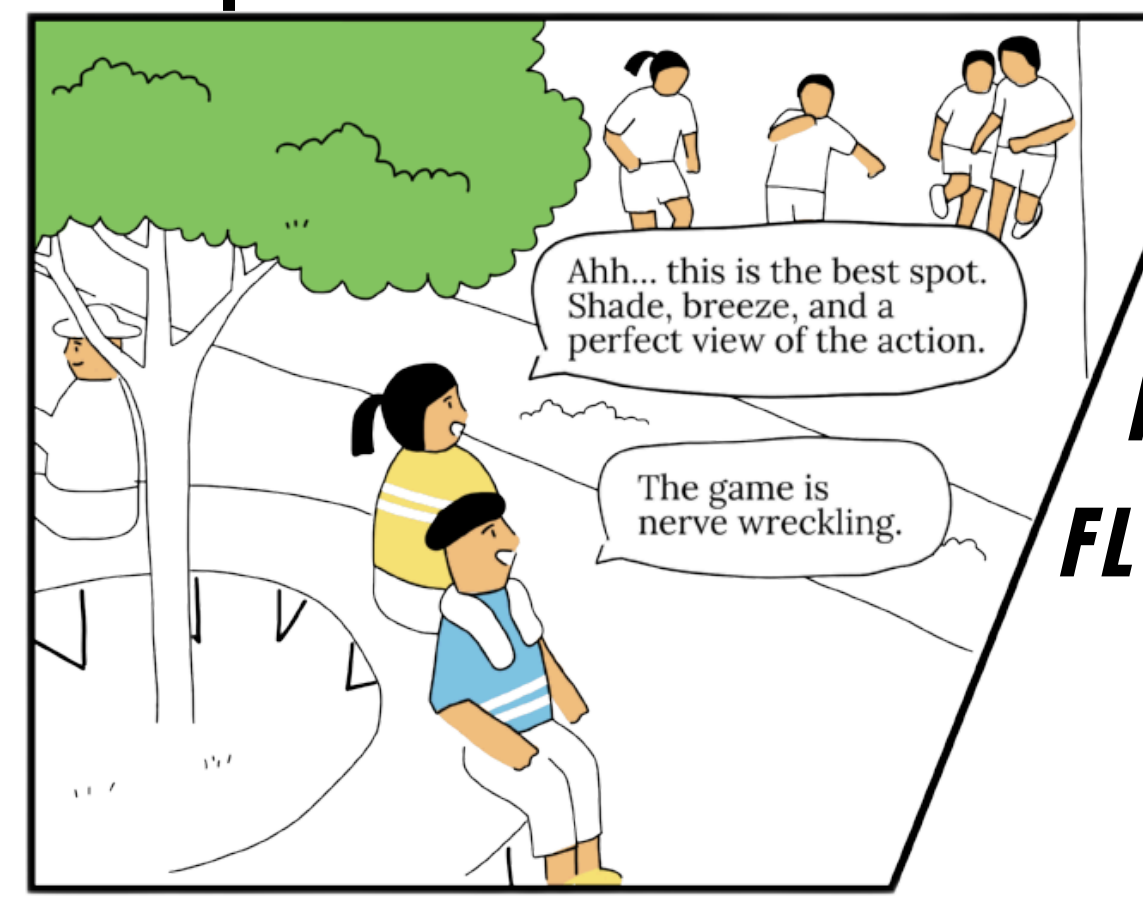
ANALYSIS



Visitors favor shaded spots by the lake and amphitheatre, while unshaded central zones are less used.

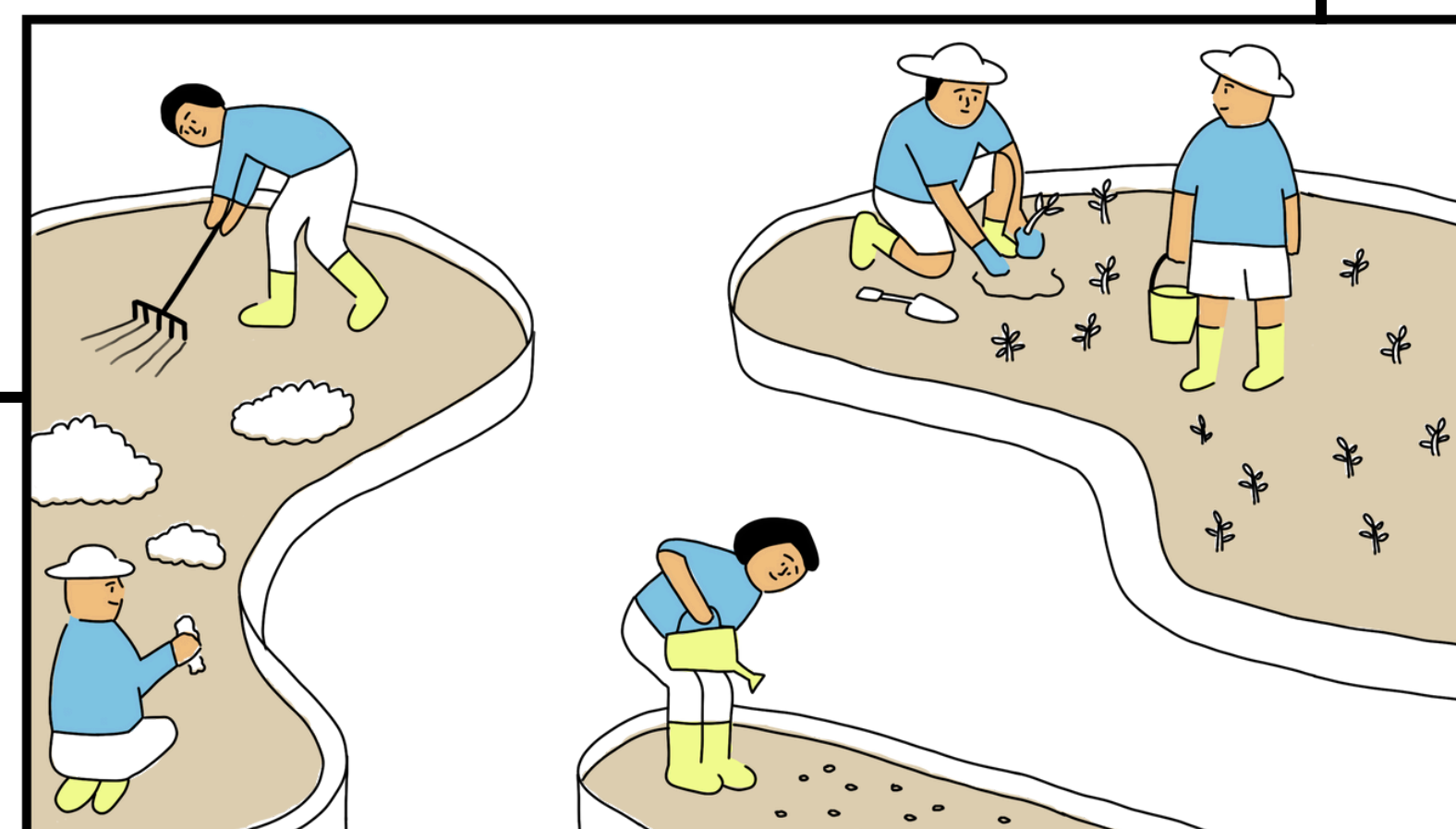
RESPONSE

Adding shaded natural and built features at key nodes helps separate visitor groups, creating comfortable spaces for diverse park activities and enhancing enjoyment.



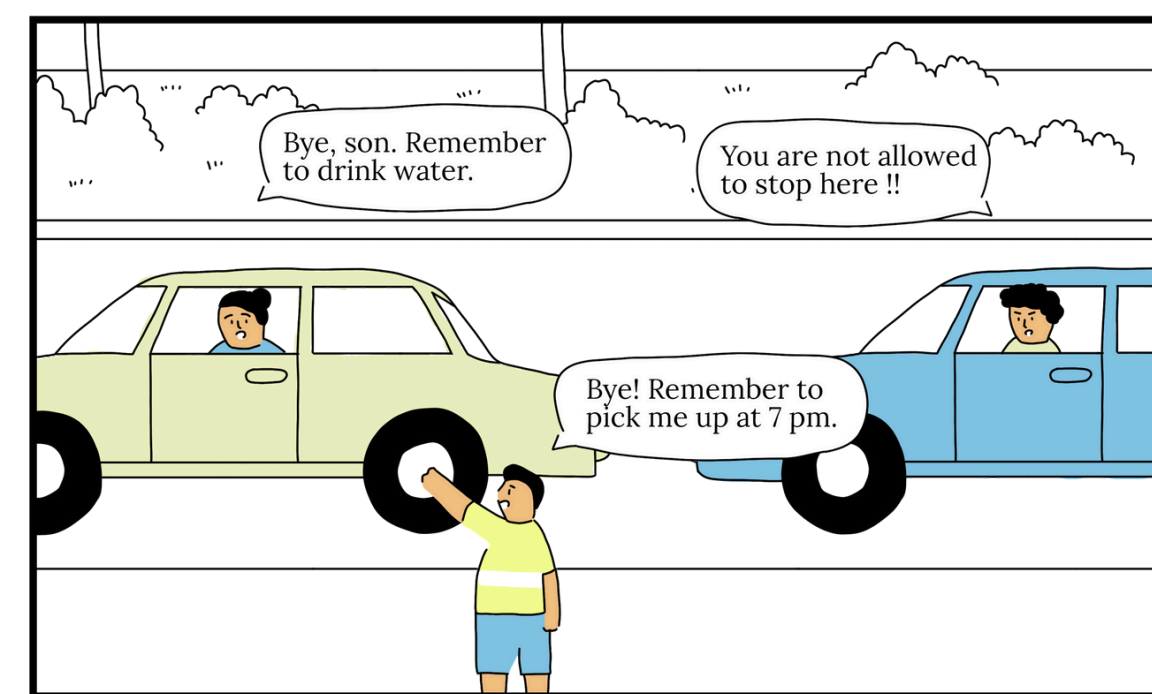
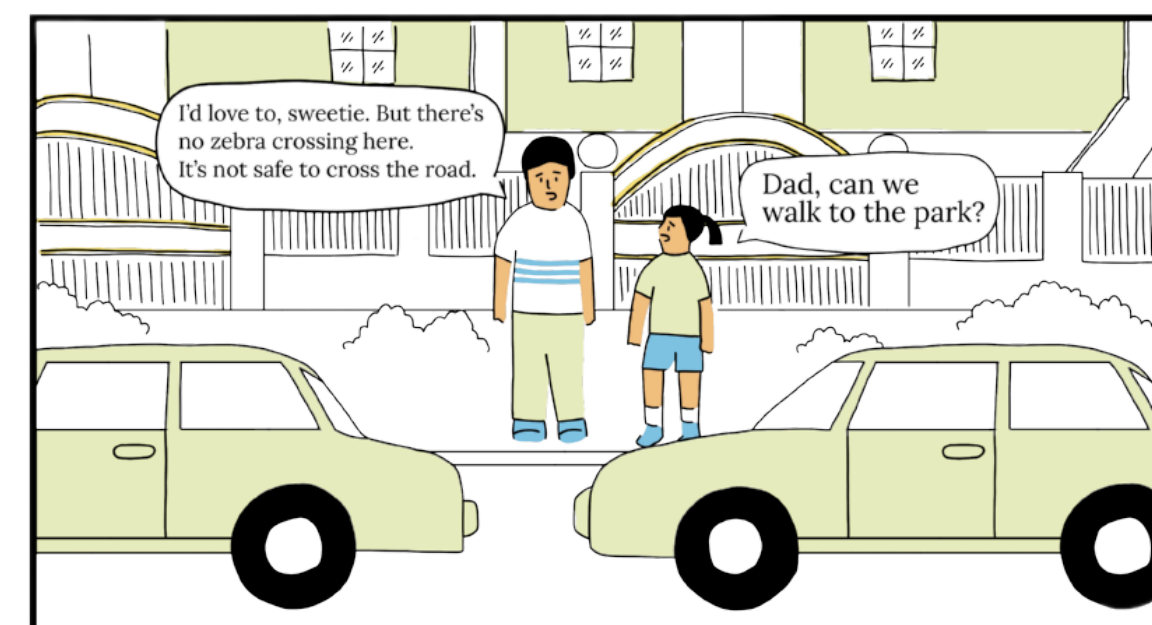
SHADED NODES FOR BETTER FLOW

REORGANIZED SPACES INTO DISTINCT ZONES

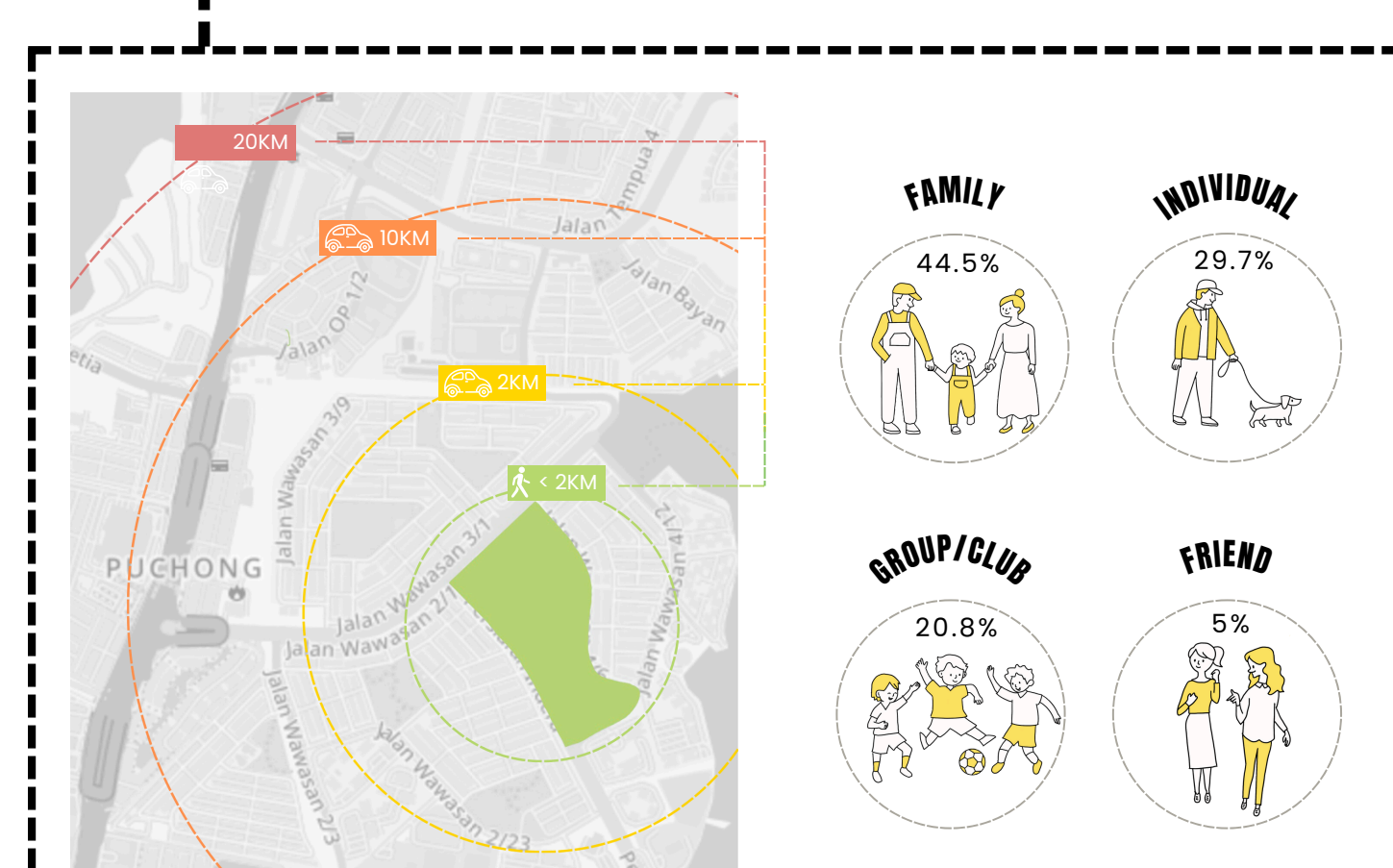


3

VISITOR DEMOGRAPHICS BY DISTANCE

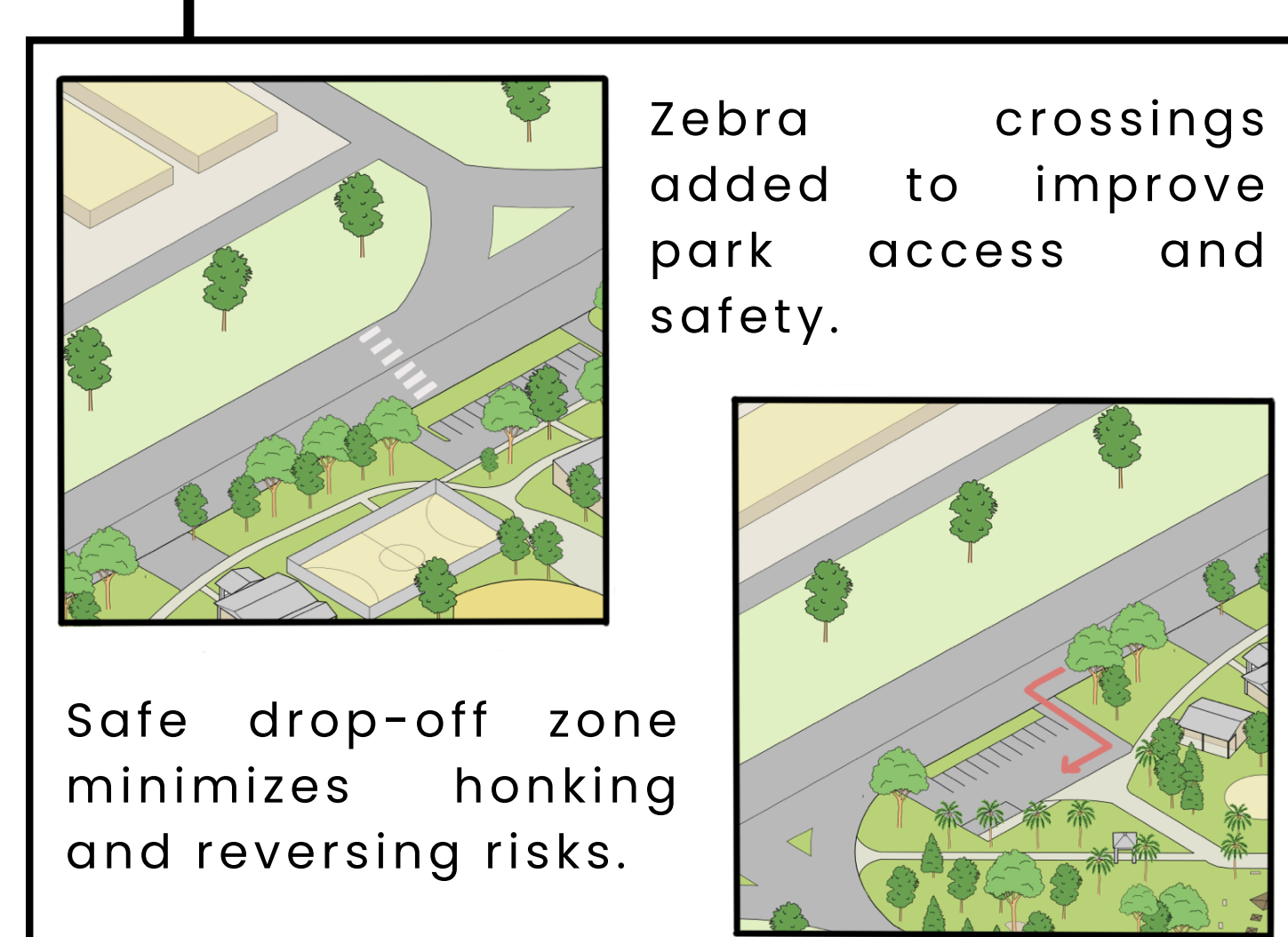


ANALYSIS

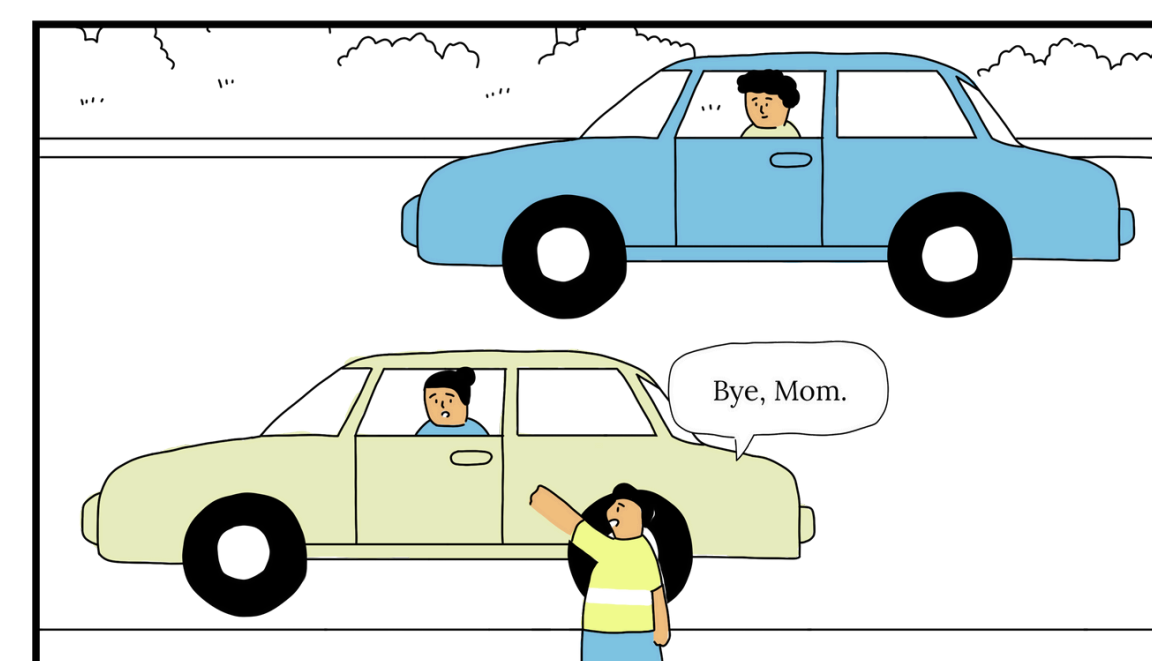
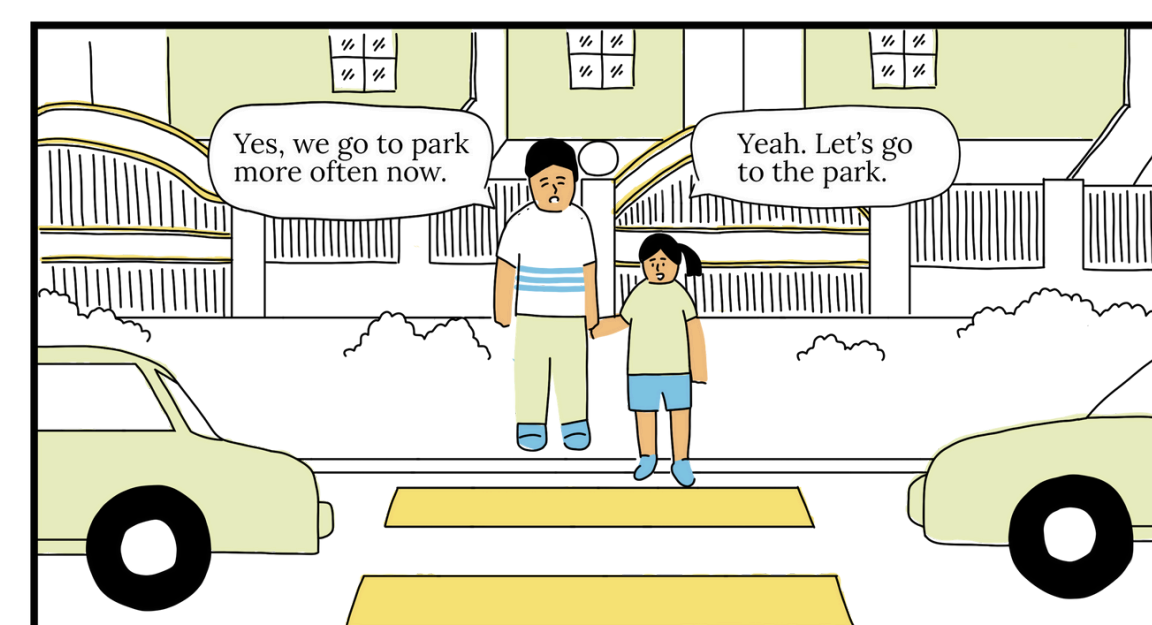


The travel distances of visitors to the location, segmented by walking and driving ranges up to 20km. Alongside, visitor categories are broken down into four groups.

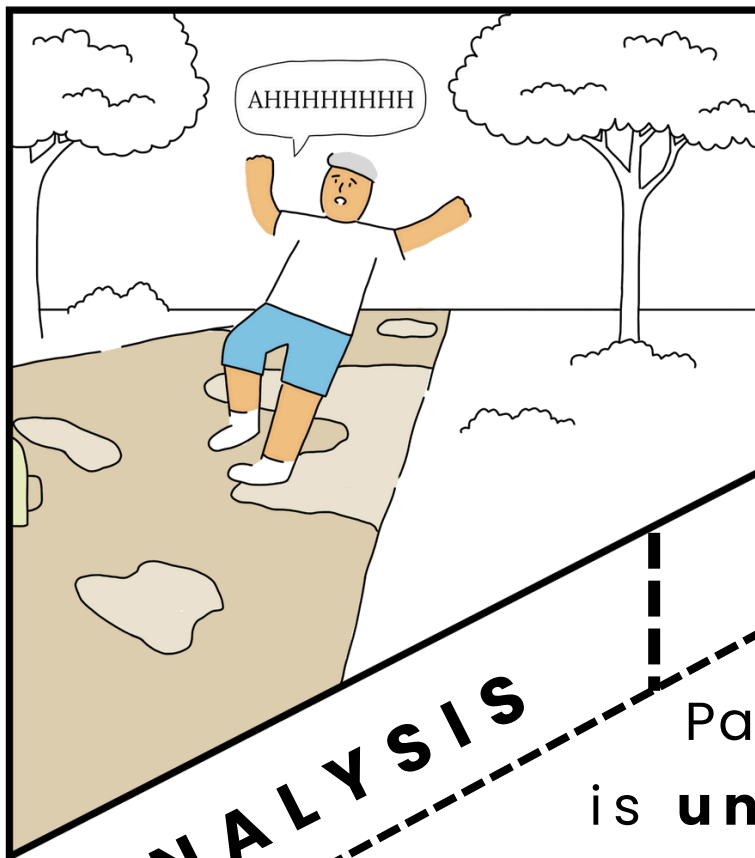
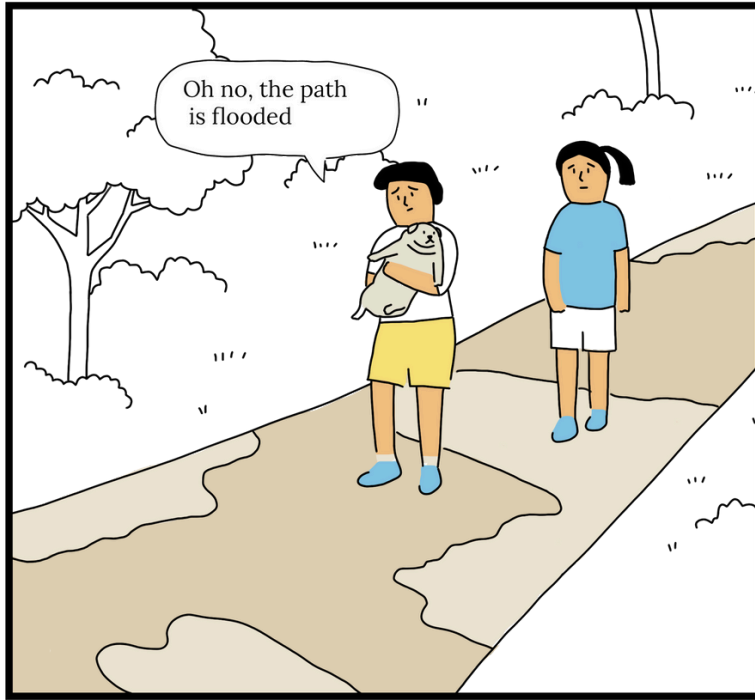
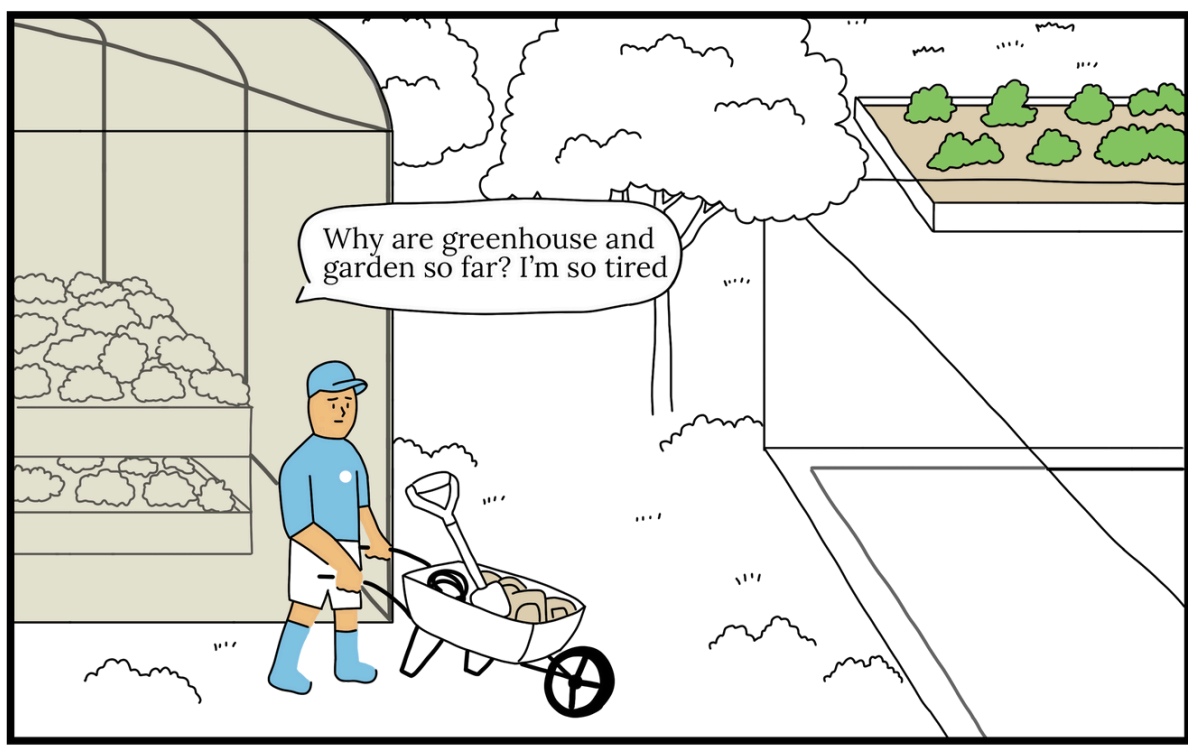
RESPONSE



Safe drop-off zone minimizes honking and reversing risks.



IMPROVED ACCESS AND SAFETY

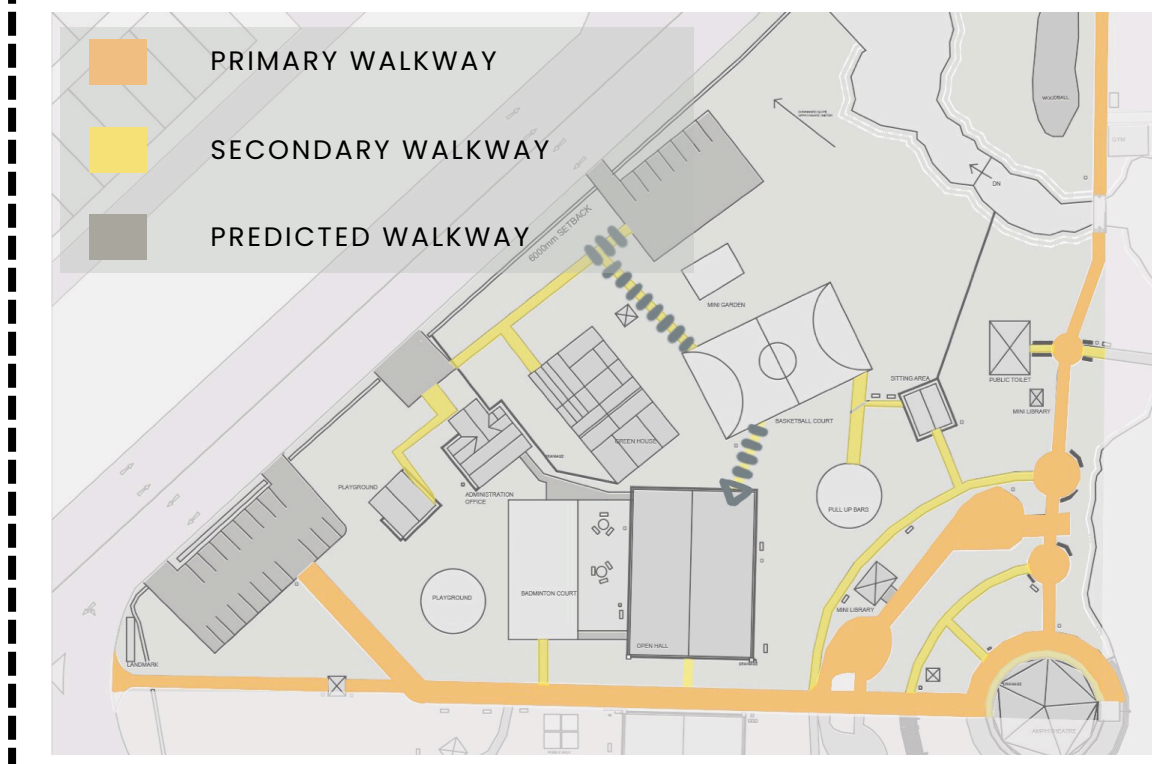


4

DISCONNECTED
CIRCULATION

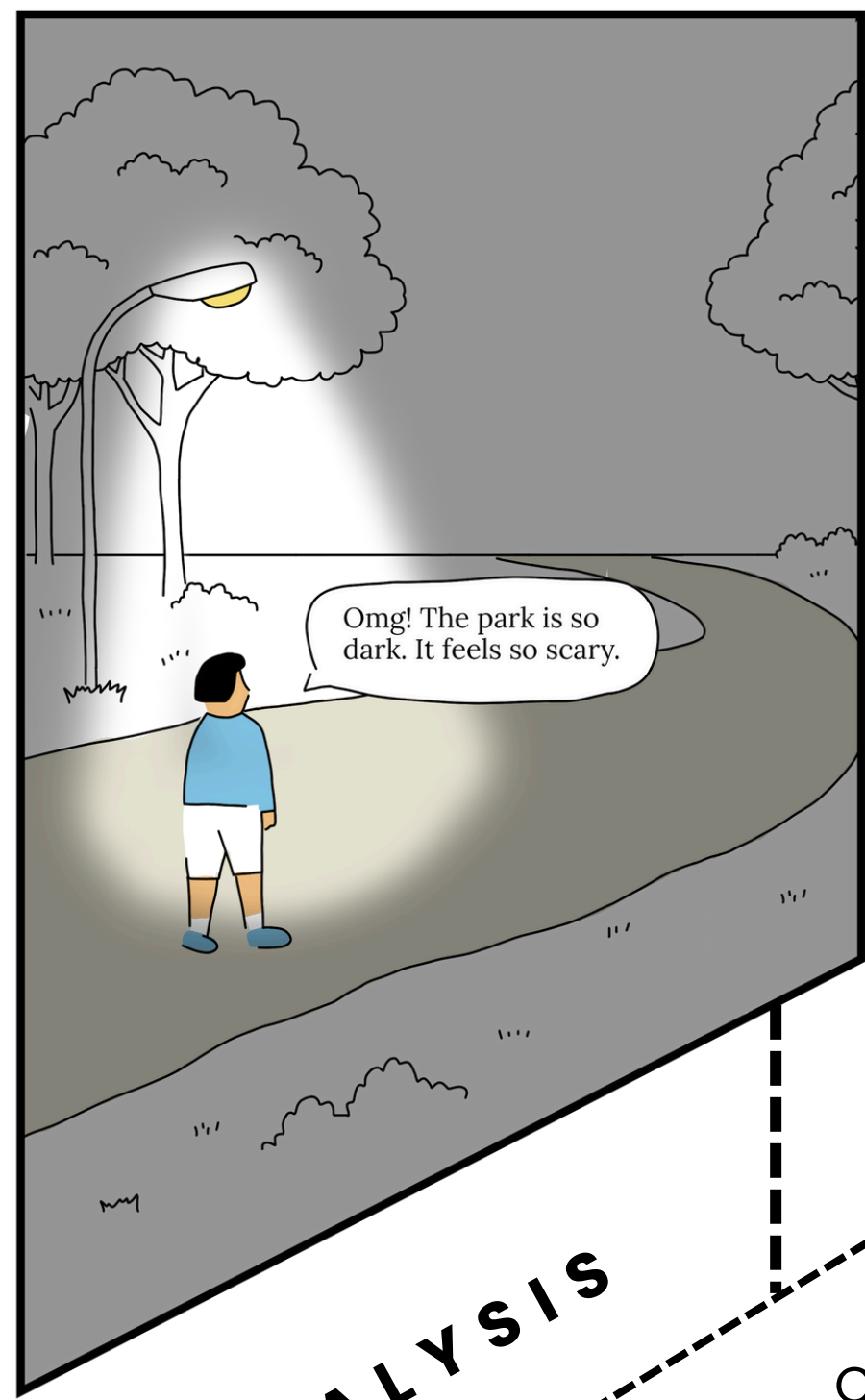
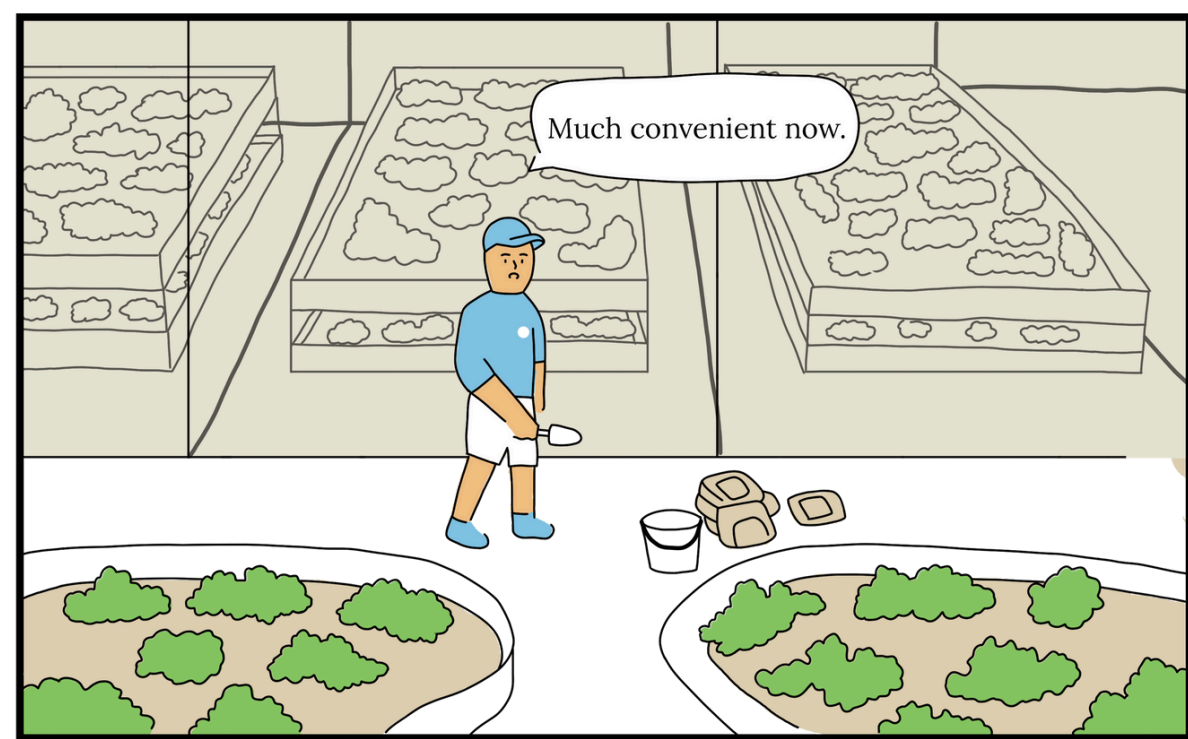
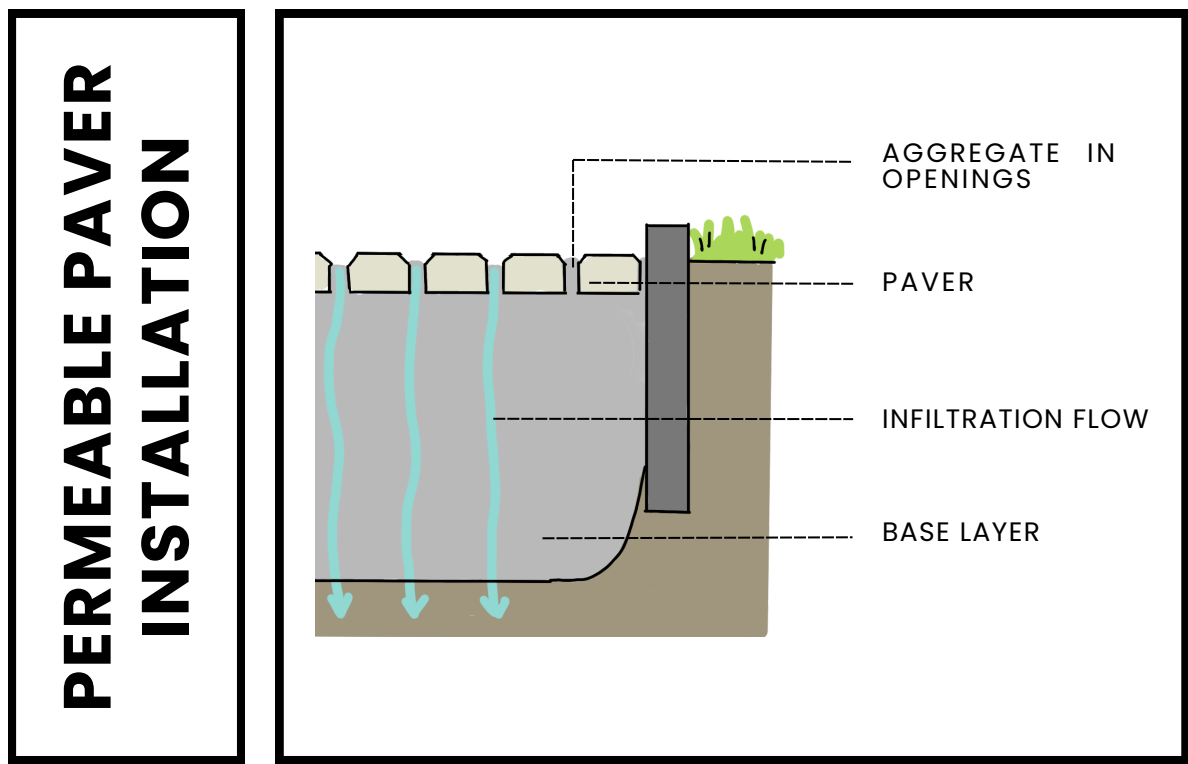
ANALYSIS

Park **circulation** is **unclear**, with disconnected spaces and **muddy**, flooded paths after rain.



RESPONSE

Added links between spaces and **upgraded paths** to prevent mud and improve comfort.



5

INSUFFICIENT
LIGHTING

ANALYSIS

Current lighting creates **dark walkways** at night, discouraging activity and raising safety concerns.



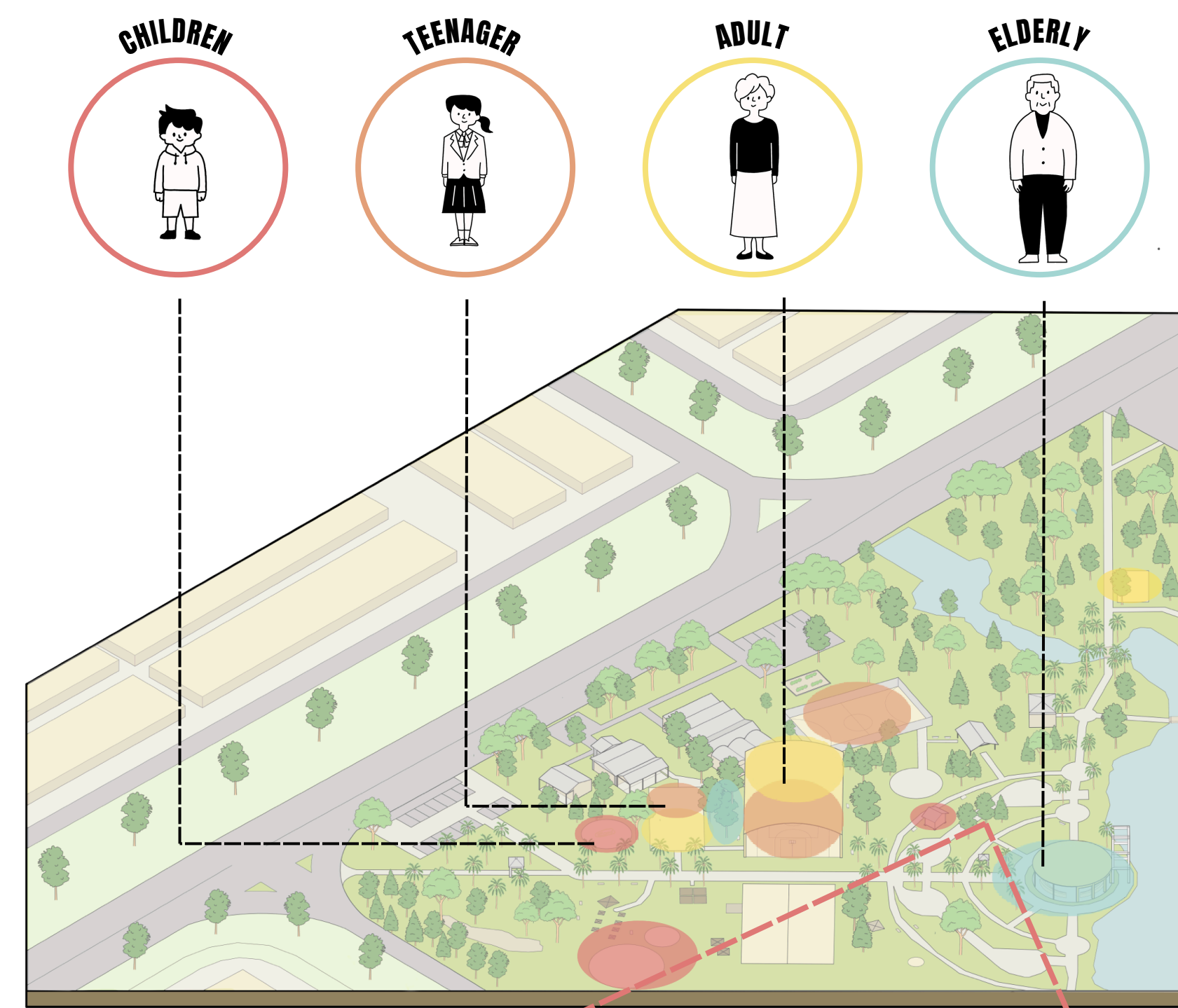
RESPONSE

Added lighting along walkways to brighten the park at night, improving safety and encouraging more nighttime activities.



ENHANCED
WALKWAY LIGHTING

DEMOGRAPHIC HOTSPOT ANALYSIS

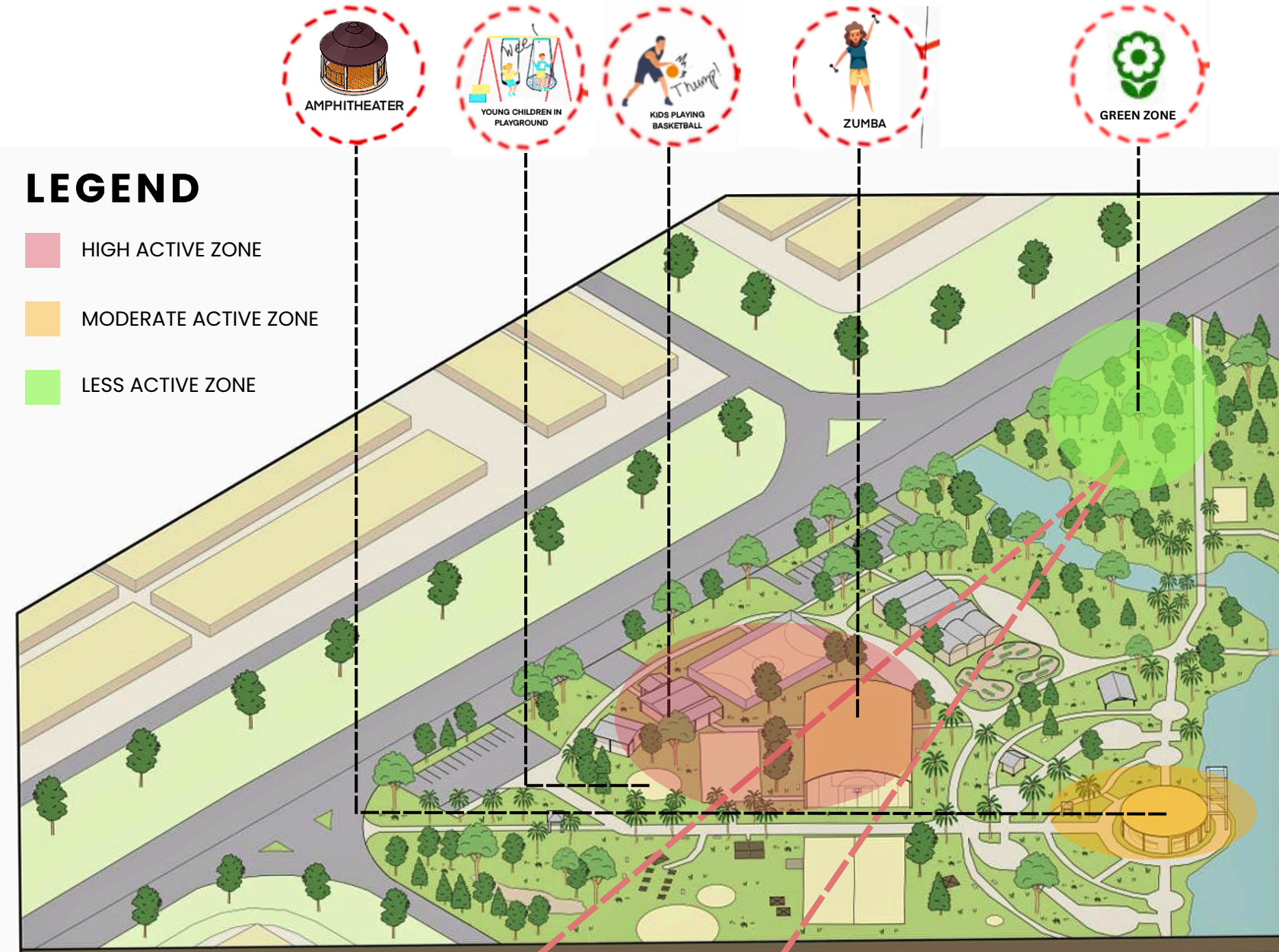


This reveals areas where specific age groups cluster and interact mainly within their own group, showing limited intergenerational mixing.

SITE
OPPORTUNITIES

- 1 QUIET BUT NOTICEABLE LOCATION**
away from noisy roads to encourage focused interaction
- 2 OPEN VISIBILITY BETWEEN ZONES**
using the main pathway foot traffic to activates the structure
- 3 USE TREE AS SHADING**
position siting area around tree, encouraging users to sit and linger

DEMOGRAPHIC HOTSPOT ANALYSIS



Our intervention transforms the **quietest zone of the park into a sensory-supportive** pavilion that welcomes neurodivergent users. The design integrates play, rest, and interaction in a safe, inclusive environment with nature as a co-creator

SITE
OPPORTUNITIES

- 1 NESTLED IN NATURE**
dense trees create a calming retreat ideal for sensory-sensitive children
- 2 NATURAL SOUND BUFFER**
thick greenery buffers loud park areas, reducing sudden noise that may distress autistic users.
- 3 CONTROLLED ENTRY - SAFE ZONE**
at the park's edge with limited entry, the zone allows easy supervision and controlled access, creating a secure, low-stimulation space for therapeutic or independent play.

SCALE 1:400

